

# **Hotline**

Electric Fencing

Powering British Farming Since 1968



Electric Fencing  
Catalogue





# Our story

At Hotline-horizont Ltd, we've been helping people protect their animals, land, and livelihoods for nearly 60 years. It all started back in 1968, when we were founded as AEC Electric Fencing Ltd in Newton Abbot, Devon. Our goal was simple: to create reliable, high-quality electric fencing—British-made and built to last.

As we grew, so did our range. In 1998, we welcomed RENCO, a Gloucestershire-based company known for its top-notch electrified netting, into the Hotline family. This let us offer even more fencing solutions for more types of users.

Then in 2007, we became part of the horizont Group—a leading name in agricultural technology, now with 80 years of expertise. This exciting partnership brought new innovation to the table, like intelligent energisers that monitor your fence in real time and keep things running smoothly, no matter the conditions.

Today, we're proud to still design and manufacture many of our products right here in the UK. Whether you're a smallholder, a large-scale farmer, or just need to keep a few curious foxes out of the garden, Hotline is here to help—with trusted products and friendly advice.

## Our brands

**Hotline**  
Electric Fencing

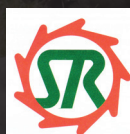
Devon made, reliable electric fencing products.  
**Powering British farming since 1968**



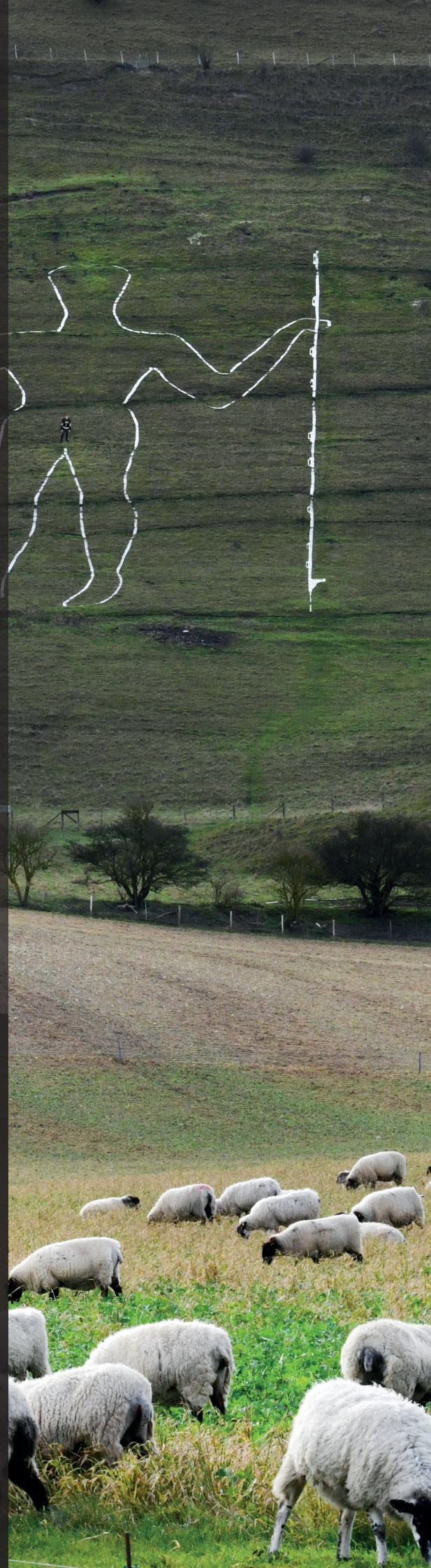
Hotline price sensitive essentials for the most crucial jobs  
**Get more than you pay for!**



Celebrating 80 years (2025) of innovation in electric fencing, horizont are world leader, proudly manufacturing in Germany.



Strainrite Fencing Systems are a leading agricultural equipment manufacturer, with a history that dates back to the early 1970's. Trusted across the world the product is **developed in the field by farmers for farmers**





Battery energisers	5
AC-DC energisers	10
Solar energisers	12
Mains 230v input energisers	13
Lead out cable and energiser accessories	15
Energiser replacement leads	16
Repair service & security box	17
Batteries	18
Solar panels	21
Testers	22
Accessories	27
Posts	24
Tape, rope & wire	31
Reels	36
Three reel systems	36
Insulators	38
Accessories	44
Contractor range - tools - Strainrite	48
Netting	50
Starter kits	57
Water pumps	58
Vision range cameras	60
Torches	62
Guidance and building a fence system	63
Problem solver	67

## Meet some of our experts

### Ian

Ian has worked for Hotline for over 30 years. He has had experience in nearly every aspect of the company, beginning his employment with the production team. Ian is the sales manager for the south of England and Scotland.



### Jason

Jason has worked widely within the electric fence world for nearly 40 years. Beginning his journey in the warehouse, he has encyclopedic product knowledge. Jason is the sales manager for the Midlands and north England.



### Kayleigh

Kayleigh has worked for Hotline for 10 years. Kayleigh is office based and permanently poised ready to answer any phone query.





# Energisers

Battery energisers are ideal for portable or remote fencing. Lightweight 6V and 9V disposable models suit short-term use, while 12V rechargeable versions offer more power for longer periods. They're easy to move but can struggle with high-demand applications, as increased power use shortens battery life.

Solar energisers offer a smart middle ground—especially in off-grid areas. By topping up a 12V battery during the day, they reduce the need for manual recharging and keep your system running longer between charges. Solar units are most effective in well-lit areas and during summer months, though panel size and battery capacity play a big role in performance.

Mains energisers deliver the most consistent power and are extremely cost-effective to run long-term. Many believe these need to be installed next to the fence, but that's not the case—HT lead-out cable (see page 15) can carry power over long distances, allowing you to keep the energiser safely housed and still power remote fence lines.

## Power Ratings: Stored vs Output Joules

Energisers are rated in joules, which measure energy.

**Stored joules:** energy held inside the energiser

**Output joules:** energy delivered to the fence

Higher output joules allow voltage to travel farther and push through challenges like undergrowth or poor conductors.

## What Loads Your Fence?

Anything that draws energy away from the fence—like long wire runs, weeds, or low-conductive tape—reduces its effectiveness. For example, poultry netting, close to the ground, easily touches grass, creating power loss. A higher joule energiser helps maintain performance under these conditions.





## Harrier 6v energiser

Portable 6v strip grazer with internal housing for the battery

- 6 & 12v battery input
- Internal housing for 6v battery (47P44)
- High & low power modes
- Pulse & low battery indicator
- Durable toggle switches
- Robust steel stand



Part no.		Stored Joule	Max output joule	Max KV	KV 500 ohm	Consumption	Max Distance*	Sheep nets	Poultry nets	Battery life 6v
47HLB150	HI	0.1	0.84	7.8	1.6	28mA	1000m	0	0	6 weeks
	LOW	0.06	0.04	6.2	1.5	18mA	600m	0	0	

## Superhawk 9v energiser

Portable 9v strip grazer with internal housing for the battery

- 9 & 12v battery input
- Internal housing for 9v battery (All Hotline 9v)
- High & low power modes
- Pulse & low battery indicator
- Durable toggle switches
- Robust steel stand



Part no.		Stored Joule	Max output joule	Max KV	KV 500 ohm	Consumption	Max Distance*	Sheep nets	Poultry nets	Battery life 9v
47HLB300	HI	0.2	0.18	9.5	2.4	45mA	1.5km	0	0	up to 21 weeks*
	LOW	0.14	0.12	8.0	1.9	30mA	1.0km	0	0	

\*165ah battery



# Energisers **Battery powered**

## Falcon 12v energiser

Powerful 12v energiser for use with external leisure batteries.

- 12v battery input
- High & low power modes
- Pulse & low battery indicator
- Durable toggle switches
- Robust steel stand



Part no.		Stored Joule	Max output joule	Max KV	KV 500 ohm	Consumption	Max Distance*	Sheep nets	Poultry nets	Battery life
47HLB500	HI	1.7	1.4	11.5	4.5	160mA	18km	15	4	up to 4 weeks*
	LOW	1.37	0.96	9.5	3.8	125mA	15km	8	2	

\*75ah battery

## Buzzard 12v energiser

Our most powerful 12v energiser for use with external leisure batteries.

- 12v battery input
- High & low power modes
- Pulse & low battery indicator
- Durable toggle switches
- Robust steel stand



Part no.		Stored Joule	Max output joule	Max KV	KV 500 ohm	Consumption	Max Distance*	Sheep nets	Poultry nets	Battery life
47HLB525	HI	3.2	2.24	11.5	4.9	320mA	25km	20	6	up to 2 weeks*
	LOW	1.6	1.25	8.4	3.5	160mA	20km	8	3	

\*75ah battery



## Shrike 3v energiser

Handy low powered energiser powered from 2 internal D-Cell batteries. Perfect for small temporary enclosures up to 800m length.

- 3v 2 x D-cell battery input
- Batteries included
- Pulse indicator
- Can hang from fence line
- Can be powered from 12v battery or solar panel



Part no.	Stored Joule	Max output joule	Max KV	KV 500 ohm	Consumption	Max Distance*	Sheep nets	Poultry nets	Battery life 9v
47HLB100	0.04	0.03	9.5	0.58	18mA	0.8km	0	0	up to 6 weeks*

\*without solar input

## Paddock Essentials MB60

12v energiser for use with external leisure batteries.

- 12v battery input
- Mounting stand
- Pulse indicator



Part no.	Stored Joule	Max output joule	Max KV	KV 500 ohm	Consumption	Max Distance*	Sheep nets	Poultry nets	Battery life 9v
47MB60	0.6	0.33	10.0	4.3	85mA	5.0km	5	1	up to 4 weeks*

\*75ah battery



# Energisers **Battery powered**

## Merlin 12v energiser

12v energiser for use with external leisure batteries.  
With internal 6v battery back up which provides power while your 12v is being charged or using for short term enclosures.

- 12v external battery input
- 6v battery back up
- Pulse & low battery indicator
- On/off switch
- Mounting stand



Part no.	Stored Joule	Max output joule	Max KV	KV 500 ohm	Consumption	Max Distance*	Sheep nets	Poultry nets	Battery life 12v
47HLB25	0.44	0.35	10.0	3.3	45mA	2.2km	2	0	up to 9 weeks*

\*75ah battery

## Hobby 12v energiser

Compact 12v energiser for use with external leisure batteries.

- 12v external battery input
- Pulse & low battery indicator
- On/off switch
- Mounting stand



Part no.	Stored Joule	Max output joule	Max KV	KV 500 ohm	Consumption	Max Distance*	Sheep nets	Poultry nets	Battery life
47HLB50	0.6	0.57	12.0	4.0	65mA	6km	5	1	up to 6 weeks*

\*75ah battery

## Raptor multi input energisers

Energisers with 6 & 12v battery and 230v input options with fence performance monitor. Available in two power choices.

- 12v external battery input
- 6V battery back up
- 230v adaptor included
- LED fence performance monitor
- Pulse and low battery indicator
- Mounting stand



Part no.	Stored Joule	Max output joule	Max KV	KV 500 ohm	Consumption	Max Distance*	Sheep nets	Poultry nets	Battery life 12v
47HLB80	0.8	0.7	8.1	4.3	107mA	8km	5	2	up to 5 weeks
47HLB170	1.7	1.3	8.6	4.6	180mA	18km	15	4	up to 4 weeks

\*75ah battery



# Energisers **Dual powered**

## Gemini 12v & 230v energisers

Energisers with 12v battery and 230v input options.  
Available in three power choices.

- 12v external battery input
- 230v adaptor included
- Pulse and low battery indicator
- Mounting stand



Part no.	Stored Joule	Max output joule	Max KV	KV 500 ohm	Consumption	Max Distance*	Sheep nets	Poultry nets	Battery life
47HLC40	0.8	0.45	7.5	3.9	85mA	8km	5	2	up to 5 weeks
47HLC80	1.2	0.8	8.2	4.2	125mA	12km	10	3	up to 3 weeks
47HLC120	2.4	1.2	8.1	4.8	200mA	18km	15	4	up to 3 weeks



# Energisers **horizont battery & dual powered**



## Trapper B12 energiser

Strip grazer powered by 9 or 12v battery.

- 9 & 12v battery input
- Pulse indicator
- 2 year warranty



Part no.	Stored Joule	Max output joule	Max KV	KV 500 ohm	Consumption	Max Distance*	Sheep nets	Poultry nets	Battery life 9v
10616	0.18	0.12	8.5	1.5	15mA	6km	0	0	up to 7 weeks

## Farming A5000 energiser

Powerful 12v battery energiser with pulse indicator.

- 12v battery input
- Pulse indicator
- Post or wall mount



Part no.	Stored Joule	Max output joule	Max KV	KV 500 ohm	Consumption	Max Distance*	Sheep nets	Poultry nets	Battery life 9v
59070	5.0	3.0	10.0	5.1	330mA	30km	25	15	up to 3 weeks

## Farming AN5000 energiser

Powerful 12v battery energiser with 230 mains adaptor.

- 12v battery or 230v mains input
- Pulse indicator
- Post or wall mount



Part no.	Stored Joule	Max output joule	Max KV	KV 500 ohm	Consumption	Max Distance*	Sheep nets	Poultry nets	Battery life 9v
59080	5.0	3.0	10.0	5.1	330mA	30km	20	15	up to 3 weeks



# Energisers **Solar powered**

## Solar Shrike energiser

Shrike energiser and solar panel bundle. The solar panel directly powers the energiser when sufficient sunlight is available, runs from the batteries when not.

- 3v Shrike energiser & 2.5w solar panel
- 2 x D-Cell batteries included
- Pulse indicator



Part no.	Stored Joule	Max output joule	Max KV	KV 500 ohm	Consumption	Max Distance*	Sheep nets	Poultry nets
47HLB100S	0.04	0.03	9.5	0.58	18mA	0.8km	0	0

## Fire Drake energisers

Solar energisers with integrated solar panels and 12v batteries. Two power choices. Power save technology consumes less power on efficient fences.

- Durable UV resistant 12w ETFE panels
- Power save technologies
- Low battery & pulse indicator
- Battery charger included



Part no.	Stored Joule	Max output joule	Max KV	KV 500 ohm	Solar panel	Consumption	Max Distance*	Sheep nets	Poultry nets
47HLS34	0.33	0.25	9.3	3.2	12w	26mA	2.5km	3	0
47HLS67	0.67	0.5	11.0	3.6	12w	20-50mA	5km	5	1

12 month only warranty on batteries

## Fire Drake 200 energiser

Solar energisers with integrated solar panels and 12v batteries. Power save technology consumes less power on efficient fences.

- Fold out durable UV resistant 24w ETFE panels
- Power save technologies
- Low battery & pulse indicator
- Battery charger included
- Post/wall bracket



Part no.	Stored Joule	Max output joule	Max KV	KV 500 ohm	Solar panel	Consumption	Max Distance*	Sheep nets	Poultry nets
47HLS200	2.5	1.8	11.0	4.6	24w	30-200mA	18km	18	5

12 month only warranty on batteries

# Energisers 230v mains powered

## 230v mains energisers with battery back-up

Mains powered energisers with bright LED fence monitor for keeping track of voltage levels on your fence. The battery back up feature allows connection of an external leisure battery to give temporary power in the event of mains power failure. Available in three power choices.

- High and low power output terminals
- Dual earth terminals
- LED fence performance monitor
- 12v battery back up input
- Wall mount



Part no.		Stored Joule	Max output joule high	Max output joule low	Max KV	KV 500 ohm high	KV 500 ohm low	Consumption	Max Distance*	Sheep nets	Poultry nets
47HM300	S. Eagle	3.0	2.4	0.7	9.5	4.45	2.5	3.4w	30km	20	8
47HM500	Condor	5.0	3.9	0.7	9.6	4.6	2.6	6w	40km	25	15
47HM700	Peregrine	7.0	4.8	0.7	10.0	4.8	2.6	10w	60km	30	25



# Energisers **ROC 2500**

## The Roc 2500 high power mains energiser with boost mode

The Roc 2500 is a 7 stored joule energiser with a 25 joule boost mode that will handle most unforeseen problems that may bring your fence voltage down to an unsecured level. The LED fence indicator offers a quick visual guide on how efficient your fence is operating while the LCD screen gives you detailed voltage information. There are two user defined low voltage alarms that can be set in the menu which can drive a 12v external siren to give real time warning if your voltage drops below the required level. Battery back up connection will mean seamless use in the event of mains power loss.

- Time delay 25J boost mode
- Fence alarms
- Fence return monitor terminal
- Dual earth terminals
- LCD display
- LED fence performance monitor
- Battery back up input
- Wall mount



Part no.		Stored Joule	Max output joule	Max KV	KV 500 ohm	Consumption	Max Distance*	Sheep nets	Poultry nets
47HMI2500	Standard	7.0	4.8	10.0	4.7	8w	50km	30	20
	Boost	25.0	13.75	10.0	6.2	23w	NA	NA	NA

### Time delay boost

High powered energisers have a greater potential to harm humans and animals, especially if a situation arises where multiple shocks could be received. Boost mode ensures an energiser can increase power to maintain effective fence voltage in a way that is safe as possible. An increase in energy is only delivered to the fence following a series of delays and alarms to ensure a temporary heavy load, which could be animal or person, has time to get clear of the fence.



### Siren and strobe for ROC energiser

External strobe and siren for alarm functions.

- 110 decibel souder
- Bright strobe
- 10m lead



Part no.
47SS1

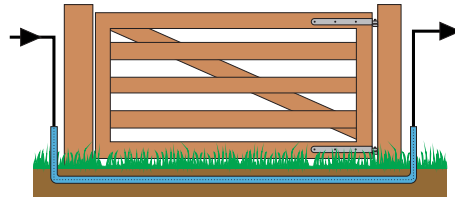
# Energisers accessories **Lead out cable and earth stakes**

## Lead out/undergate cable

Cable designed to take power across distances from energisers to fences and across gaps such as gates, without loss of power.

- Insulated to 18kv
- Can be buried or pinned along fences without loss

Part no.	Core	Length
47HT10G	1.6mm	10m
47HT25G	1.6mm	25m
47HT50G	1.6mm	50m
47HT100G	1.6mm	100m
47HTG50-25	2.5mm	50m



## Strainrite lead out cable

Heavy duty underground cable

- Soft 2.5mm galvanised core
- Double insulated LDPE



Part no.	Length
47FCA00292	100m

## Waterproof connector for lead out

- Secure and efficient connection
- Waterproof

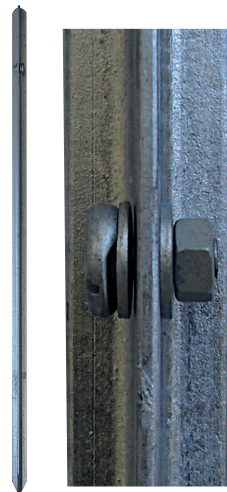


Part no.	Pack
47HTC1	Each

## T earth stakes

Heavy duty T section earth stakes with bolt connector.

- 25mm T section galvanised steel
- 1 or 1.5m lengths
- Galvanised bolt connector

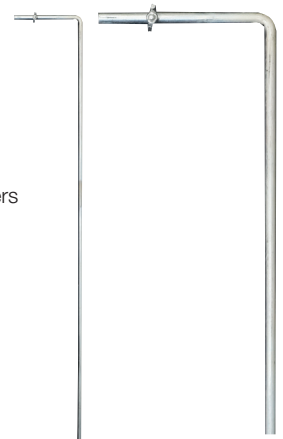


Part no.	Length
47EST1	1m
47ES3	1.5m

## Earth rod

8mm rod earth stake with wing nut connection.

- 1m length
- 8mm plated steel
- Can be used to mount Shrike energisers



Part no.	Length
47ES2	1m

## Crocodile clips

Heavy duty crocodile clips for connection to HT lead out and battery leads.

- 2 x standard clips
- 2 x 12v battery terminal clips



Part no.	Pack
47PCR6-4	4

## Lightning diverter

Provides a ground connection with a wide spark gap to channel lightning strikes to ground to protect the energiser.

- Post mounting
- Requires earth stake and HT lead



Part no.	Pack
47P74	Each



# Energiser accessories Replacement leads

## Earth & fence leads

Replacement lead sets for battery energisers.

- Heavy gauge copper wire
- Durable insulation
- Plastic clips



Part no.	Pack	Suitable for
47HTL-EL	Pair	All battery energisers with M6 terminals
47SHTL-EL	Pair	47HLB100 Shrike energiser

## 12v battery leads

Replacement 12v battery lead sets.

- Twin core
- Plastic clips

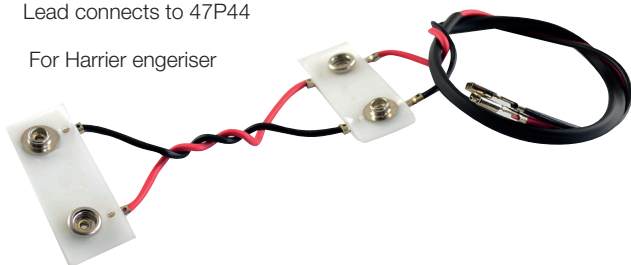


Part no.	Pack	Suitable for
47BL1A	Set	Harrier, Superhawk, Falcon, Buzzard
47BL12	Set	Gemini, Hobby, Merlin
47BL5-S	Set	Mains battery back up
47BL1	Set	Shrike 12v option

## 6v battery connector

Replacement battery lead and connector for Harrier.

- Lead connects to 47P44
- For Harrier energiser



Part no.	Pack
47BT2	Set

## 9v battery leads

Replacement battery leads for Superhawk.

- Leads connect to all 9v batteries
- For Superhawk energiser



Part no.	Pack
47WIRE0114	Set

## horizont fence connection leads

Heart type fence connector and earth stake lead with ring terminal.

- For 8mm terminals
- 1m live lead, 50cm earth lead

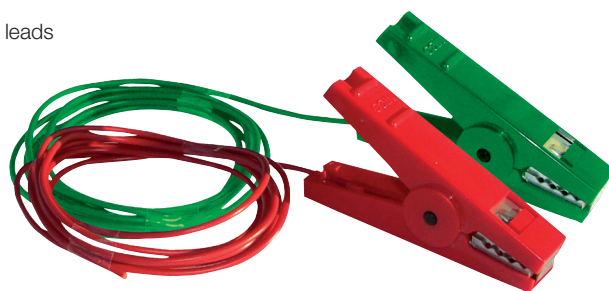


Part no.	Pack
15522C	Set

## horizont croc clip fence leads

Earth and fence leads with croc clips.

- For 8mm terminals
- 1.5m leads

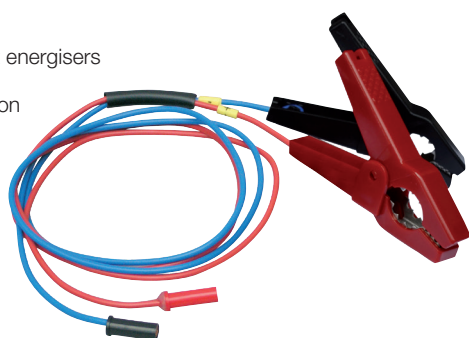


Part no.	Pack
14879C	Set

## horizont 12v battery leads

12v croc clip lead set with bayonet connectors.

- For 9v horizont energisers with a 12v option



Part no.	Pack
90501C	Set

## Replacement power supply

Power supplies for 230v, combination input energisers and solar energisers.

- With 5.1 male jack connection



Part no.	Pack	Suitable for
47PSU0009UK	Each	Gemini energisers
47PSU0012UK	Each	S. Eagle, Condor, Peregrine
47BC-UK	Each	Fire Drake

## Repair Service

We offer a full repair and maintenance service and can often breath life into seemingly extinct energisers. Spending a working life out in the elements is tough for an electronic device, but our team of engineers are experienced in seeing through the insects and mud to squeeze out a few more years of service. Manufacturing here in Devon enables us to buck the trend of modern throw-away practice, common in the electronics industry. If the energiser is beyond rescue, we can often offer a reconditioned unit as a replacement. All repairs are covered by a 1 year warranty.



## Security box with mounting stand

Steel security box for protecting your battery powered energiser and battery from theft. The live output and earth from your energiser connects internally, electrifying the box. An insulated key is used to access the box. The lock can be configured to turn off the energiser when opened.

- Heavy duty steel box
- Insulated steel stand & earth stake
- Insulated key
- Internal dimensions - W:45 D:27 H:54 cm
- Solar bracket available (not included)



Part no.	Pack	
47VP1	Set	Box and stake
47MA1	Each	Solar panel bracket



# Batteries

The majority of energisers are battery powered. Lower Joule energisers have lower power consumption and can be powered from 3, 6 or 9v batteries whereas higher joule energisers require 12v batteries. The Ah (amp hour) rating dictates how long the battery will last.

## 12v Leisure batteries

12v leisure batteries are not like car batteries - they are designed for deep cycling, delivering steady power over long periods. This is what makes them the best choice for electric fencing systems. That being said, electric fencing is hard on rechargeable batteries. Energisers are usually in a field and not always regularly checked. This can lead to deep discharging which can reduce the life of the battery

Using a proper battery charger is essential for maintaining 12v leisure batteries. A quality charger ensures the battery receives the correct charge rate without overcharging which can damage the batteries cells. Regular charging extends battery life.

As temperatures drop, it is crucial to store your 12v leisure batteries correctly in order to protect performance and lifespan. Before winter sets in, fully charge your battery and store it in a dry, frost-free location. Keep your battery off the ground and away from damp. For long-term storage, connect a solar trickle charger, smart maintainer or solar panel to keep topped up to prevent sulfation. You should also make sure your battery is disconnected from any equipment to prevent against "phantom drain".

Leisure batteries will perform at their best with regular maintenance. Check the charge levels as often as possible. If your energiser has a battery indicator, remember to check all is OK.

- Corroded terminals: Clean them with baking soda and water using a wire brush
- Cracks or swelling: These could be signs of overheating - replace the battery immediately
- Loose connections: These can lead to arcing or unreliable power delivery
- Leaking acid or residue: Clean thoroughly and inspect regularly for ongoing issues





## 9v air alkaline batteries

9V energiser batteries with bayonet connections.

- Dry battery
- For 47HLB300 Superhawk energiser
- Air alkaline for superior performance over saline



Part no.	Ah	Box qty
47P31-55	55	4
47P32-90	90	4
47P32-120	120	4
47P32-165	165	4

## 6v air alkaline battery

Double PP8 battery.

- Dry battery
- 40 Ah capacity
- For 47HLB150 Harrier energiser



Part no.	Ah	Box qty
47P44	40	12

## 6v spring top batteries

PJ996 lantern type battery.

- Dry battery
- Back up battery for 47HLB25 Merlin energiser (50Ah)



Part no.	Ah	Box qty
47PJ6-50	50	12
253967	7	12



## Expert insight

6 & 9 volt batteries are single use batteries which cannot be recharged and commonly used on low joule strip grazing energisers with low power consumption. They are lightweight, smaller than a leisure batteries and are usually housed within the energiser. Hotline versions are air alkaline which offer optimum voltage for a longer period than saline alternatives, which tend to supply steadily decreasing voltage which can affect energiser output. Gasses from saline batteries can also corrode the electronics in your energiser.

*Kayleigh*



# Batteries 12v batteries

## 12v SFL leisure batteries

Sealed, deep cycle wet battery.

- Sealed wet battery
- Magic eye charge indicator
- Carry handle



\* Brand and Ah rating may vary dependent on supply

Part no.	Ah
47L75	70-85*
47L35	28

## 12v 'fit one charge one' SFL battery set

Two sealed, deep cycle wet batteries with a mains battery charger. Keep one ready to go & one in the field

- Sealed wet battery
- Magic eye charge indicator
- 2 x lightweight 28Ah batteries
- 1 x 4amp battery charger



Part no.	Ah
47F1C1	28
47BCF1	Replacement charger

## AGM batteries

Absorbent glass matt sealed batteries.

- Sealed 'dry' battery
- Replacement batteries for solar energisers



Part no.	Ah
47L12-7	7
47L12-12	12
47LS36	32

\* Brand may vary dependent on supply

## Digital battery chargers

Automatic battery chargers for deep cycle 12v batteries.

- Automatic controlled charging
- LED charge status
- Overheat & reverse polarity protection
- Carry bag



Part no.	Power	For batteries
47BCP	7amp	14 -230Ah

## Expert insight



If you are tired of expending electricity and muscle power bringing your energiser batteries in to charge, then solar power may be your answer.

The level at which the panel will extend the life of your battery is dependent on the power of your fencer and the duration and strength of available light. The stronger the fencer, the more quickly it will draw power from the battery and the less time the panel has to replace the charge. The ability of the panel to produce and replace the energy used by your energiser is indicated by the watt capacity of the panel, so a 20 watt panel will replace the charge quicker than a 10 watt.

Dependent on strength of sunlight, the 10 watt panel will extend the battery life of a 0.5 joule fencer up to 400%, but to achieve an autonomous system higher watt panels can be used. The panels are fitted with a charge controller, to guard against the battery overcharging.

*Jason*



Look for the icon for recommended panel size.

### Solar assist panels

Solar panels for extending keeping your 12v batteries charged

- Premium crystalline cells
- Aluminium frame
- Durable tempered glass
- Charge controller
- Angled mounting stake



Part no.	Watt	Best energiser match
47SP10W-S	10	Merlin, Hobby, Gemini 40/80
47SP20W-S	20	Above plus - Gemini 120, Falcon
47SP30W-RS	30	As above, plus - Buzzard
47SPSTK		Mounting stake

### Solar panel for Shrike energiser

Clip on 2.5w panel for 47HLB100 Shrike energisers.

- Saves batteries when sunlight is sufficient
- Clips to top of the energiser



Part no.	Watt
47SP2W-S	2.5



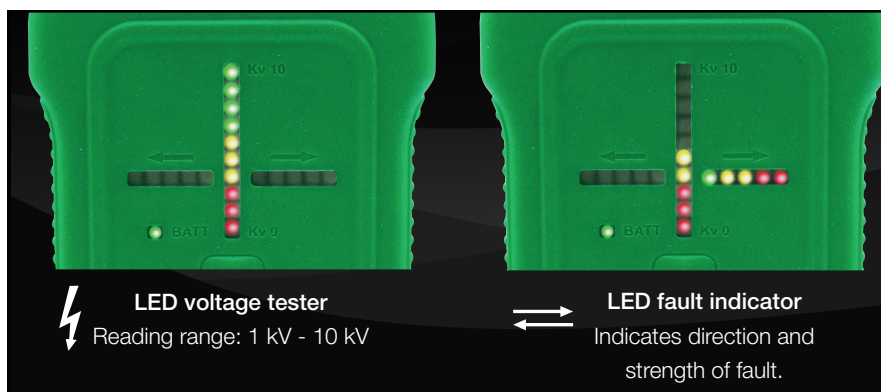
# Testers and fault finders

## Feildmate fault finder

Electric fence voltage tester & directional fault finder.

The feildmate tester gives fence voltage readings from 1000v to 10,000v volts. If the voltage drops below 4000v the fault detection LEDs will direct the user to the direction and load of the fault.

- LED voltage indicator - 1000v to 10,000v
- LED fault direction indicator from 4000v
- Self earthing
- Low battery LED (battery included)
- 1 year warranty



Part no.	Pack size
47FF10	Each

## Digital fault finder

Electric fence digital fence tester & directional fault finder.

Works on the principle that current flows through the path of least resistance. If there is a short on the fence, larger flows of current (Amps) are detected and displayed and an arrow indicates the direction of the fault.

- Illuminated LCD screen
- Waterproof
- 9v battery included



Part no.	Pack size
47V10	Each

## Electric fence digital tester

Digital tester for fences and batteries.

- Clear LCD screen
- Reads fence voltages from 500v to 15,000v
- Reads battery voltages from 2.5v to 40v
- Ground probe connection
- 9v battery included



Part no.	Pack size
47DD15	Each

## Expert insight



Ian

Having a reliable tester is key to maintaining an effective fence. Not only for keeping track of voltage on the fence line, but also for fault finding. By testing the different fence elements separately (energiser, earth, leads & fence line) you can isolate where a potential problem lies. Helping customers on a phone call is much easier if you have a good tester!

### Pocket beeper tester

Audible, no contact proximity tester.

- Simple indication that voltage is present
- Key ring
- Not recommended for fault finding
- Requires 1 CR2032 lithium battery (included)



Part no.	Pack size
47P20B	Each

### Six light fence tester

Neon tester with ground probe.

- Reads from 1000v to 10,000v
- No batteries required
- Ground probe connection



Part no.	Pack size
47P70	Each

### LED tester

Pocket size tester with bright coloured LED array.

- 10 bright coloured LEDs
- Self earthing
- Battery power indicator
- Requires 2 CR2016 lithium battery (included)



Part no.	Pack size
47KV10	Each

### Voltage indicator

Clips to the fence line & flashes to indicate effective voltage.

- Flashes at voltage above 3000v
- Turns off below 3000v
- Requires 1 CR2032 lithium battery (included)



Part no.	Pack size
47FA20	Each

### Fence line indicator lamp

Hangs onto the fence line and flashes in time with the pulse.

- LEDs flash with pulse of the fence
- Turns off under 2000v
- Can serve as a visible predator deterrent



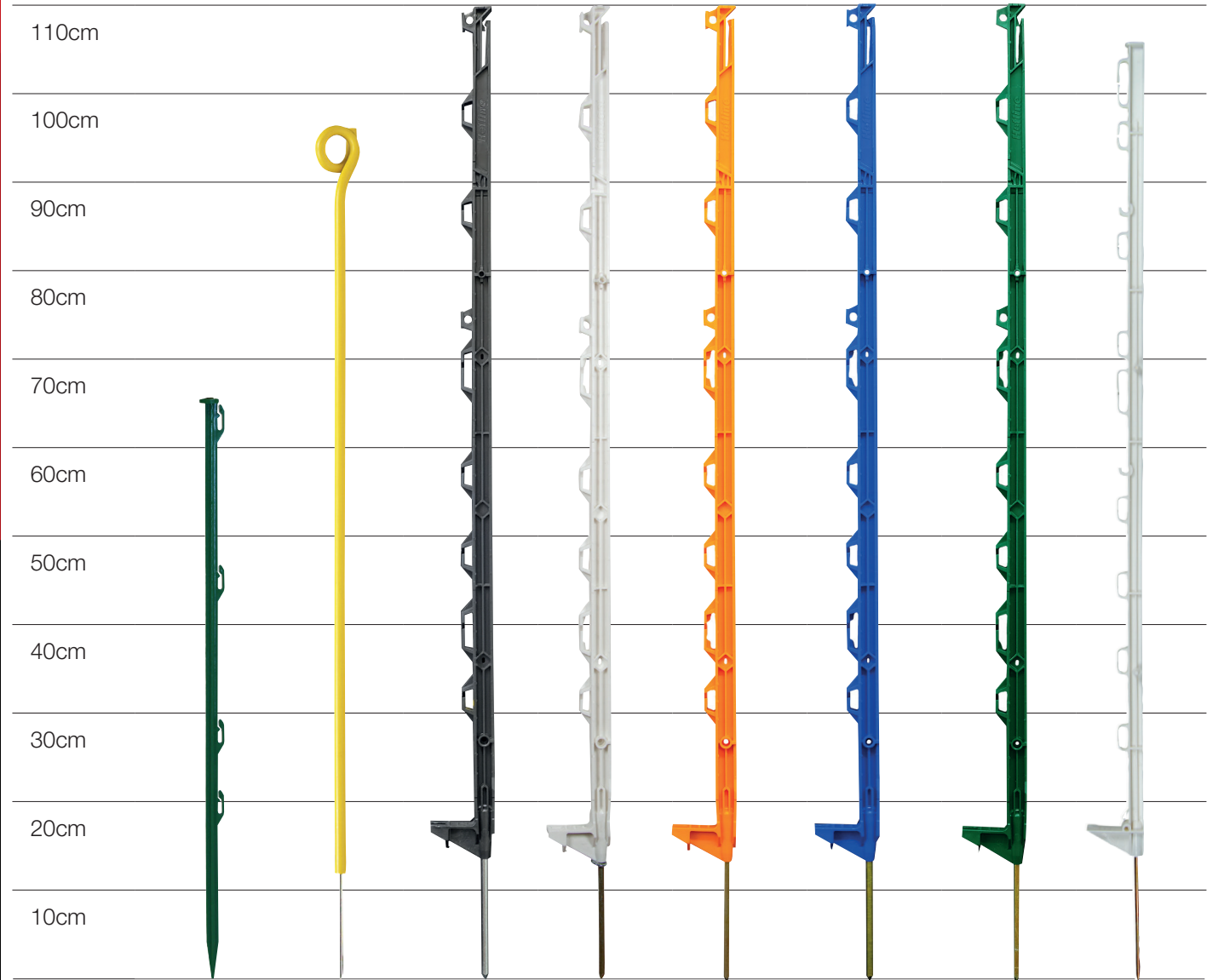
Part no.	Pack size
47P71	Each



Posts Plastic posts



120cm



## Rabbit and garden post - 70cm

All plastic post for rabbit and pest systems.

- For wire & tape up to 20mm
- 70cm overall length

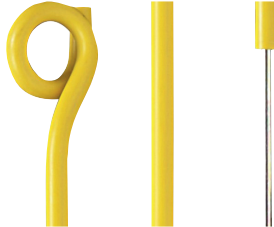


Part no.	Pack size
47CP3-10	10

## Plastic pigtail post - 95cm

Extruded PVC pigtail post with plated steel spike

- For polywire
- Plated spike
- 12mm diameter



Part no.	Pack size
47P16-10	10

## ECO multiwire post - 108cm

Multiwire plastic post made from recycled material

- For wire and tape up to 40mm
- Recycled plastic
- Plated spike

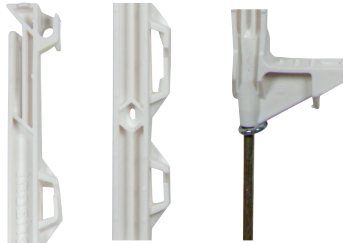


Part no.	Pack size
47ECO2000BK-10	10

## Multiwire post white - 108cm

Multiwire plastic post made from premium polymer.

- For wire & tape up to 40mm
- Premium plastic
- Plated spike



Part no.	Pack size
47CP3000W-10	10

## Multiwire post orange - 108cm

Multiwire plastic post made from premium polymer.

- For wire & tape up to 40mm
- Premium plastic
- Plated spike



Part no.	Pack size
47CP3000O-10	10

## Multiwire post blue - 108cm

Multiwire plastic post made from premium polymer.

- For wire & tape up to 40mm
- Premium plastic
- Plated spike



Part no.	Pack size
47CP3000B-10	10

## Multiwire post green - 108cm

Multiwire plastic post made from premium polymer.

- For wire & tape up to 40mm
- Premium plastic
- Plated spike



Part no.	Pack size
47CP3000G-10	10

## Paddock multiwire post - 105cm

Light duty plastic multiwire post.

- For wire & tape up to 40mm
- Plated spike

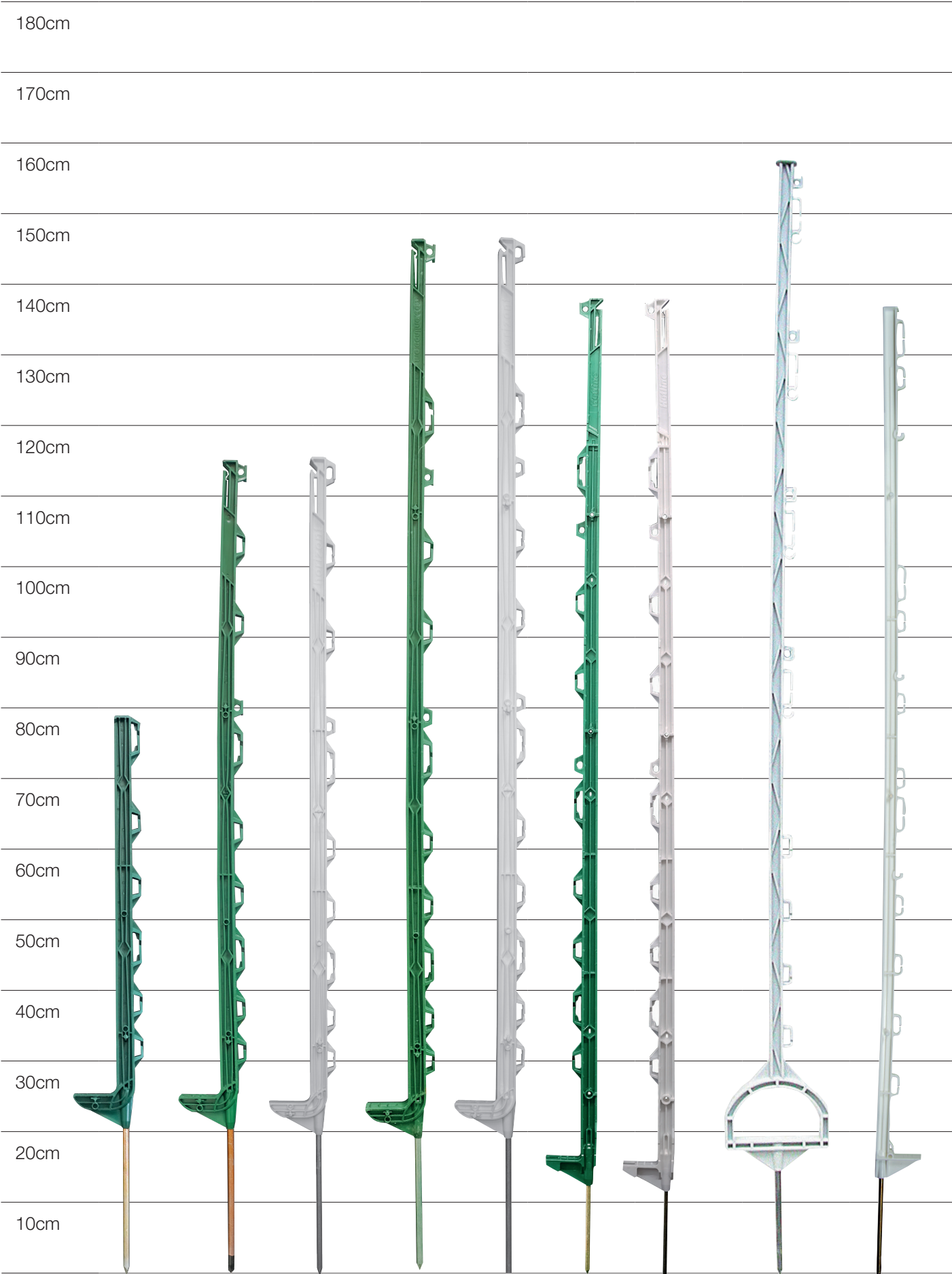


Part no.	Pack size
14995	10





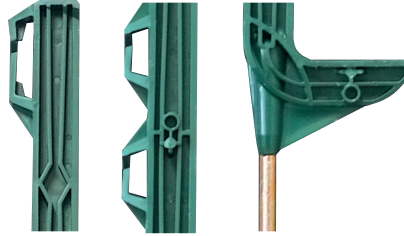
Posts Plastic posts



## Smart post green - 78cm

Heavy duty premium plastic post.

- For wire and tape up to 40mm
- Reinforced design
- Extended plated spike

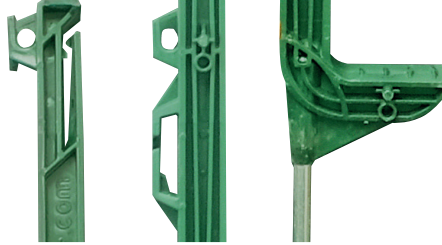


Part no.	Pack size
14990-10GN	10

## Smart post green - 115cm

Heavy duty premium post 115cm

- For wire and tape up to 40mm
- Reinforced design
- Extended plated spike

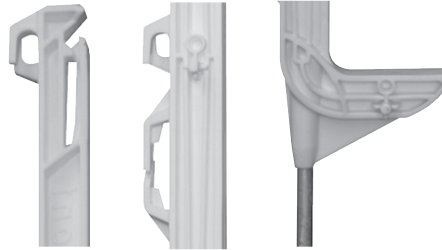


Part no.	Pack size
14491-10GN	10

## Smart post white - 115cm

Heavy duty premium post 115cm

- For wire and tape up to 40mm
- Reinforced design
- Extended plated spike



Part no.	Pack size
14491-10	10

## Smart post green - 145cm

Heavy duty premium post

- For wire and tape up to 40mm
- Reinforced design
- Extended plated spike

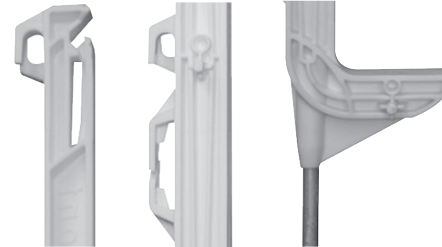


Part no.	Pack size
14492-10GN	10

## Smart post white - 145cm

Heavy duty premium post

- For wire and tape up to 40mm
- Reinforced design
- Extended plated spike



Part no.	Pack size
14492-10	10

## Multiwire post - 138cm

Multiwire plastic post made from premium polymer.

- For wire & tape up to 40mm
- Premium plastic
- Plated spike

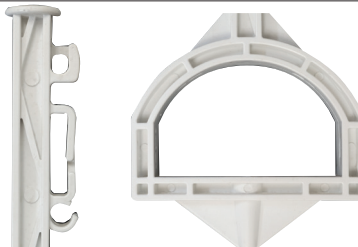


Part no.	Pack size	
47CP14H-10	10	White
47CP14G-10	10	Green

## Stirrup post - 157cm

Multiwire plastic post made from premium polymer.

- For wire & tape up to 40mm
- Premium plastic
- Plated spike



Part no.	Pack size
47HP5-15	5

## Paddock multiwire post - 136cm

Light duty plastic multiwire post.

- For wire & tape up to 40mm
- Plated spike

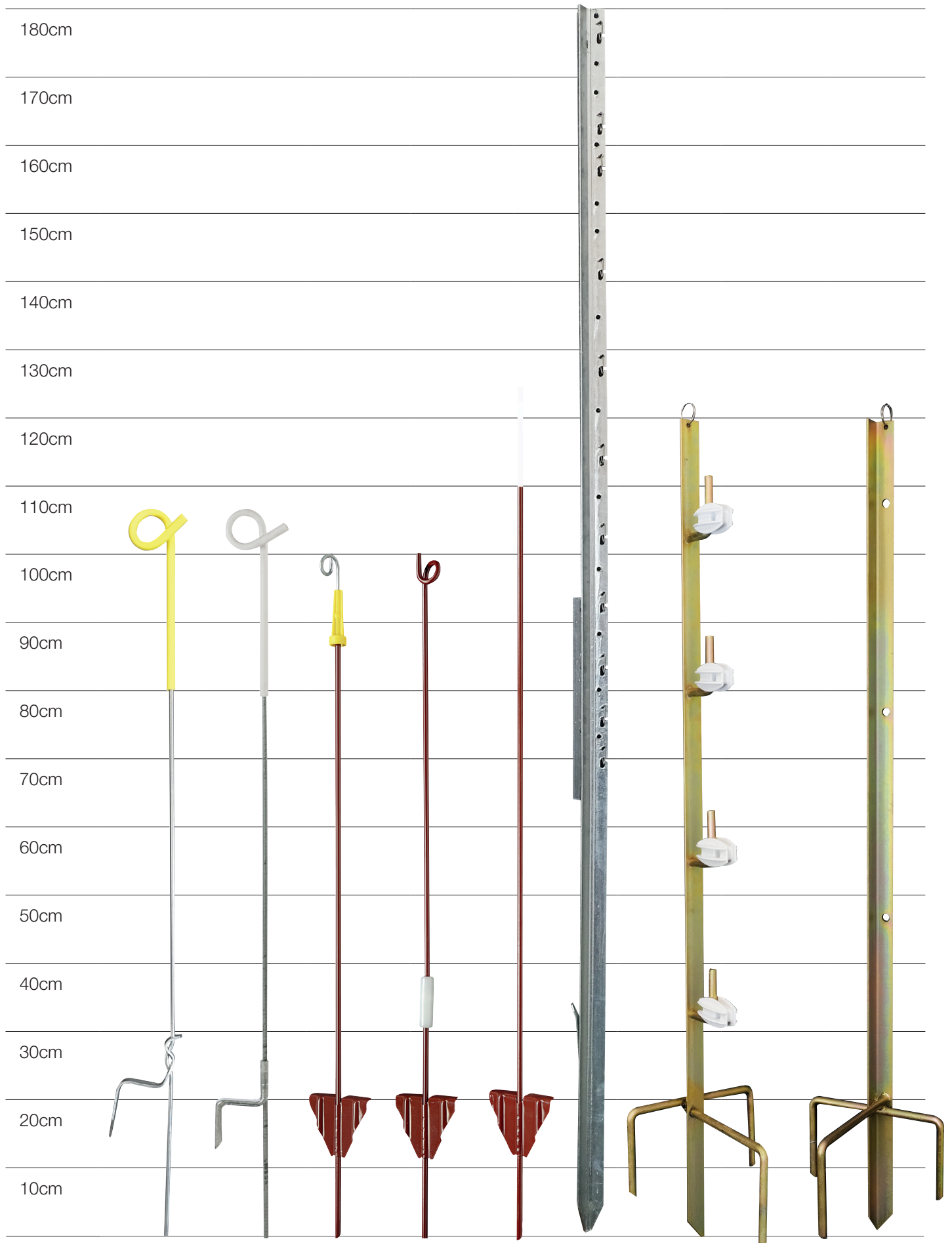


Part no.	Pack size
14996	10





## Posts Metal posts



## Paddock Essentials pigtail post - 104cm

Spring steel pigtail post.

- 6mm galvanised steel
- Yellow insulating sleeve
- Pressed steel footplate



Part no.	Pack size
47C2Y-10	10

## Strainrite gold foot pigtail post - 104cm

Heavy spring steel pigtail post.

- 7mm galvanised steel
- White insulating sleeve
- Heavy duty pressed steel foot plate



no.	Pack size
PG00040	10

## Steel pigtail post - 100cm

Heavy duty steel post with pigtail insulator.

- 9mm powder coated steel
- Plastic insulator with plated steel pigtail
- Welded triangular foot plate



Part no.	Pack size
47P2-10	10

## Live pigtail post - 100cm

Heavy duty pigtail post with live shaft.

- 9mm powder coated steel
- Live pigtail and shaft to deter pushing
- Welded triangular plate

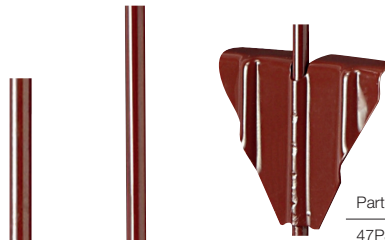


Part no.	Pack size
47PL32-10	10

## Steel plain post - 115cm

Heavy duty steel post.

- 9mm powder coated steel
- For use with adjustable insulators
- Welded triangular plate



Part no.	Pack size
47P3-10	10

## Quickclip Y post - 180cm

Intermediate galvanised Y profile steel post.

- Galvanised one piece Y profile with anti pull out plate
- Quick spring clips for stock fence & high tensile wire
- Multiple positions for insulators



Part no.	Pack size
47QC180	Each

More info on page 30

## Reel fixing post

Plated steel angle post for reels.

- Plated steel
- 4 spike ground anchor

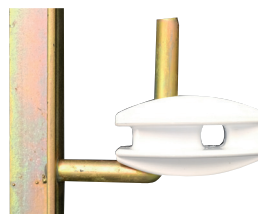


Part no.	Pack size
47PR2	Each

## End/corner fixing post

Plated steel angle post for corners and terminations.

- Plated steel
- 4 spike ground anchor
- 4 insulators



Part no.	Pack size
47PR3	Each



# QUICKCLIP

Quickclip Heavy Duty Galvanized Steel Fence Posts are engineered for strength, longevity, and ease of use—making them the smart choice for demanding fencing applications.

Crafted from high-tensile steel and hot-dip galvanized to top industry standards, each post is backed by a 40-year guarantee. The fully formed Y-profile (not welded) offers exceptional stability in all directions, ensuring long-lasting performance even under heavy strain.

Installation is fast and effortless. These posts can be driven straight into the ground—no digging, no concrete required. An integrated anti-pullout plate keeps the post firmly anchored, even under high tension.

For added convenience, each post includes 304-grade stainless steel clips, allowing for quick, tool-free wire installation without extra parts or fuss.

- Universal Wire Compatibility: Suitable for use with a wide range of wire types—not restricted to a single brand or supplier.
- High-Tensile Steel Construction: Delivers exceptional strength and long-term durability.
- Long-Lasting Galvanized Coating: Provides superior corrosion resistance with a 40-year guarantee.
- 304 Stainless Steel Clip: Allows quick and easy wire installation without additional tools or fasteners.
- Fully Formed Y-Profile: Increases strength and resists warping in all directions.
- Cost-Effective: A durable, maintenance-free alternative to wooden posts, with faster and easier installation.
- Easy Installation: Can be driven directly into the ground—no digging, concrete, or specialized equipment required.
- Anti-Pullout Plate: Secures the post firmly in place, even under high tension.
- Maintenance-Free: No painting, staining, or replacing—just long-lasting performance.
- Safe and Eco-Friendly: Non-toxic, livestock-safe, and fully recyclable. No harmful chemicals or treatments.

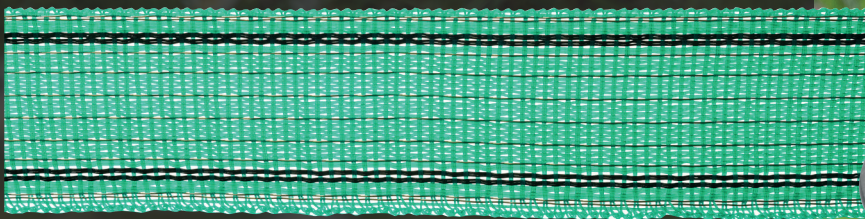
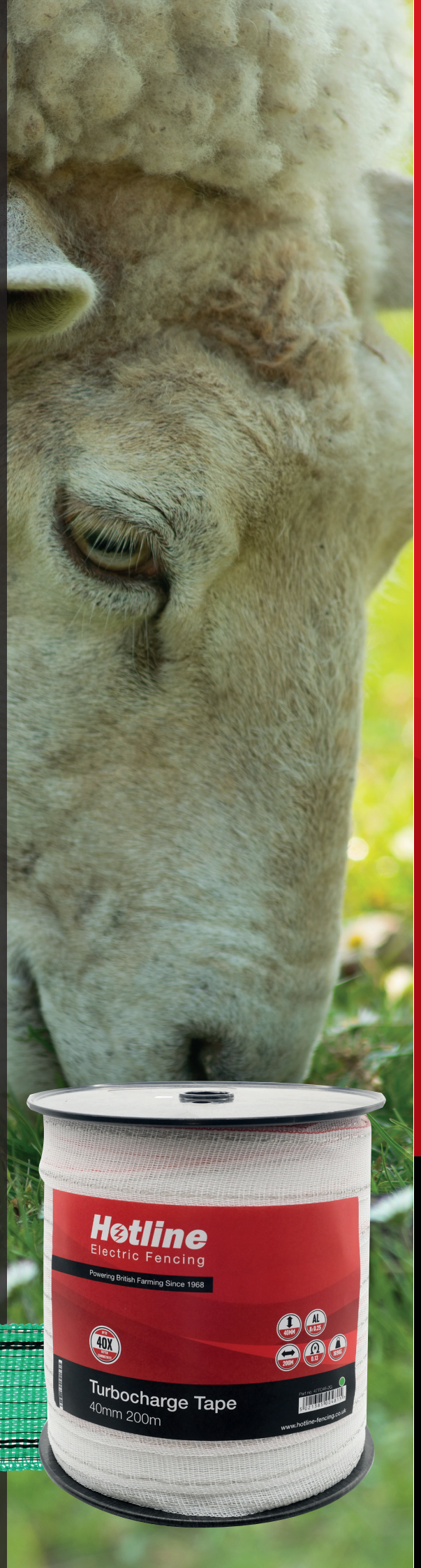




# Wire rope & tape

Tape, rope or wire, what do you choose? All conduct a charge in the same way, what differs is the medium within which the conductors are carried. An important factor is visibility. For most animals an electric fence acts as a psychological barrier and they have to be able to see it to avoid it. This is also a consideration when considering colour – a product with a low visual impact from a human point is also much harder for an animal to see. Products which offer a higher contrast with the surrounding environment are more likely to be effective. Tapes and ropes are more common in equine applications and both have pros and cons. Tape offers the greater range of visibility as it is available up to 40mm in width and as such is often used as alternative to traditional fencing. As its profile is wide and flat it is susceptible to catching the wind which overtime can break down the conductors, as can constant moving and re-erecting. Many Hotline tapes have thick polyurethane webbing with extra thick edging to extend the life of the fence. Rope is a very good alternative to tape and what is lost on visibility is made up for in durability.

Poly-tapes, ropes and wires conduct power through thin metal conductors running through the length. The more metal in a fence line the more efficient it will be. Steel conductors have a good balance of conductivity and tensile strength and copper (usually nickel plated) and aluminium conduct extremely well but have a lower tensile strength. Products with a combination of the two aim to take advantage of the strength of steel while using the copper to reduce the overall resistance of the product. Where the strength of the plastic structure is high, aluminum is used for premium conductivity. Resistance is measured in Ohms. A lower Ohm value indicates the product offers less resistance to the energy flowing through it and so will take the power further.





# Wire rope & tape **Polywire**

## Paddock polywire

Polywire with 6 stainless steel conductors.

- For short fence lengths



Part number	Width	Length	Conductors	Colour	Break str	Ohms/m
47C21-250	1.2mm	250m	6 SS	White	55kg	7.4
47C21-500	1.2mm	500m	6 SS	White	55kg	7.4

## Supercharge polywire

Polywire with stainless steel conductors.

- For short and medium fence lengths



Part number	Width	Length	Conductors	Colour	Break str	Ohms/m
47P10-1G	1.2mm	100m	4 SS	Green	47kg	9.0
47P21-250	2mm	250m	6 SS	Red/white	85kg	3.9
47P21-500	10mm	200m	6 SS	Red/white	85kg	3.9

## Turbocharge polywire

Polywire with stainless steel and copper conductors.

- High conductivity
- For longer fence lengths
- Orange, white & yellow



Part number	Width	Length	Conductors	Colour	Break str	Ohms/m
47P62-250	2mm	250m	3 CU +6 SS	Or/wh/yell	85kg	0.33
47P62-500	2mm	250m	3 CU +6 SS	Or/wh/yell	85kg	0.33



## Turbocharge braided polywire

Braided polywire with stainless steel and copper conductors.

- High conductivity
- Braided not twisted
- Less likely to twist and tangle



Part number	Width	Length	Conductors	Colour	Break str	Ohms/m
47B9-500	3mm	500m	3 CU +6 SS	Red/white	140kg	0.06



## Paddock rope

Polypropylene rope with stainless steel conductors.

- For shorter fence lengths



Part number	Width	Length	Conductors	Colour	Break str	Ohms/m
47C51-1	6mm	100m	6 SS	White	248kg	3.8
47C51-2	6mm	200m	6 SS	White	248kg	3.8

## Supercharge rope

Polyethylene rope with stainless steel and aluminium conductors.

- For medium fence lengths



Part number	Width	Length	Conductors	Colour	Break str	Ohms/m
47P51-2	6mm	200m	3 CU +3 SS	White	340kg	0.24
47P51-2G	6mm	200m	3 CU +3 SS	White & green	340kg	0.24
47P51-4G	6mm	400m	3 CU +3 SS	White & green	350kg	0.24

## horizont rope

Polypropylene rope with stainless steel conductors.

- For shorter fence lengths



Part number	Width	Length	Conductors	Colour	Break str	Ohms/m
153372	6mm	200m	6 SS	White	350kg	0.22
153372-400	6mm	400m	6 SS	White	350kg	0.22
17183	6mm	200m	6 SS	Green & white	250kg	4.05
17183-400	10mm	400m	6 SS	Green & white	250kg	4.05



## Bungee rope

Expandable rope with stainless steel conductors.

- Perfect for creating expandable gates and access ways.



Part number	Width	Length	Conductors	Colour	Break str	Ohms/m
47B100	6mm	100m	6 SS	Red/white	N/A	9.0

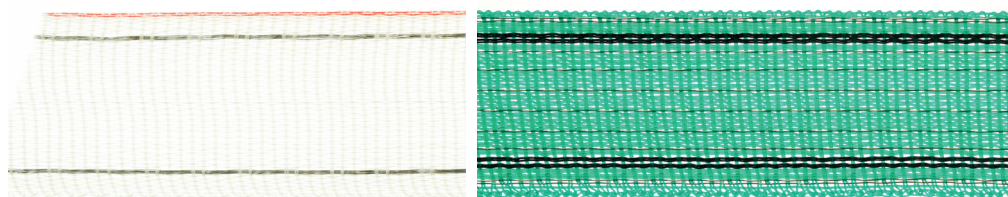


# Wire rope & tape **Tape**

## Turbocharge tape

Tape with aluminium conductors.

- Highly conductivity
- For longer fence lengths



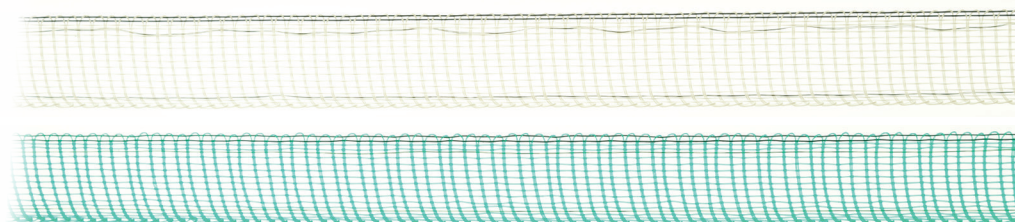
Part number	Width	Length	Conductors	Colour	Break str	Ohms/m
47TC49-1	10mm	100m	4 AL	White/red	64kg	0.26
47TC41-2	10mm	200m	4 AL	White/red	64kg	0.26
47TC43-2	20mm	200m	4 AL	White/red	85kg	0.26
47TC46-2	40mm	200m	8 AL	White/red	169kg	0.13
47TC46-2G	40mm	200m	8 AL	Green	169kg	0.13



## Paddock essentials tape

Tape with stainless steel conductors.

- For shorter fence lengths



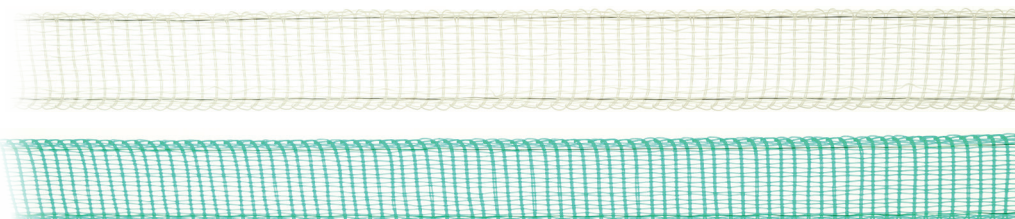
Part number	Width	Length	Conductors	Colour	Break str	Ohms/m
47C42-2	12mm	100m	4 SS	White/Blk	52kg	9.98
47C43G-2	20mm	200m	4 SS	Green/Blk	76kg	9.98
47C43-2	20mm	200m	4 SS	White/Blk	76kg	9.98
47C46-2	40mm	200m	8 SS	White/Blk	146kg	4.5
47C46-2G	40mm	200m	8 SS	Green/Blk	146kg	4.5



## horizont tape

Tape with stainless steel conductors.

- For shorter fence lengths



Part number	Width	Length	Conductors	Colour	Break str	Ohms/m
17475	20mm	200m	4 SS	White	90kg	10.08
17475GR	20mm	200m	4 SS	Green	90kg	10.08
17272 (Pack of 2)	20mm	200m	4 SS	White	90kg	10.08
17458	40mm	200m	8 SS	White	120kg	5.4
17458GR	40mm	200m	8 SS	Green	120kg	5.4



## Supercharge galvanised stranded wire

Malleable stranded all metal wire.

- 7 strand galvanised wire
- Easy to work
- High efficiency
- Durable



Part number	Width	Length	Break str	Ohms/m
47P22	1.5mm	200m	200kg	0.12
47P23	1.5mm	400m	200kg	0.12

## High tensile steel wire

2.5mm diameter wire for long permanent fences.

- Highest efficiency
- Long lasting
- Easy spool wooden frame



Part number	Width	Length	Break str	Ohms/m
47HT650	2.5mm	650m	500kg	0.04

## Expert insight



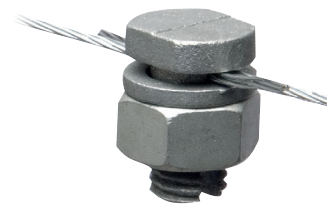
Using the correct connector for joining and repairing your fence line is best way to make sure you do not lose conductivity. Plastic wires tape and ropes have thin metal conductors that carry the electric pulse. Greater metal content carries the pulse with less loss so if all

conductors are not interconnected the fence line is not as efficient. **lam**

## Bolt connectors

Heavy duty wire connectors

- Galvanised steel
- For steel wire up to 4mm



Part no.	Pack size
47P82-5	5



## Rope & wire connectors

Bolt and plate connectors.

- Heavy duty
- For joins and ends



Part no.	Pack size	Up to	Material
47C93-4	4	6mm	Galvanised
47C94-10	10	3mm	Galvanised
47SS93-4	4	6mm	Stainless steel



## Connection buckles

Heavy duty tape connectors.

- Composite plastic and steel buckle
- Unique grip bar
- Steel conductor for efficient joins



Part no.	Pack size	Size
47CB20-5	5	20mm
47CB40-5	5	40mm





# Reels

## Premium geared reel

3:1 ratio geared reel with UV guaranteed spool.

- 3:1 turning ratio
- Plated steel frame with stabiliser bracket
- Handle with ergonomic grip
- Wire guide
- Plastic gate handle for wire end



Part number	Qty	Capacity wire	Capacity rope	Capacity tape (20mm)
47P25G5	Each	800m	200m	200m

## Paddock Essentials geared reel

3:1 ration geared reel.

- 3:1 turning ratio
- Plated steel frame
- Handle
- Wire guide



Part number	Qty	Capacity wire	Capacity rope	Capacity tape (20mm)
47CGR500	Each	800m	200m	200m

## Small reel

Clutched reel with steel frame

- 1:1 turning ratio
- Plated steel frame
- Clutch
- Knob fixing for 47PR2 reel fixing posts



Part number	Qty	Capacity wire	Capacity rope	Capacity tape (20mm)
47P25-300	Each	300m	100m	100m

## Plastic reel

All plastic, lightweight reel.

- Shatterproof
- Handle
- Brake peg
- Fence line hooks



Part number	Qty	Capacity wire	Capacity rope	Capacity tape (20mm)
47R25	Each	300m	100m	100m

## Reel fixing bracket

Steel bracket for fixing geared reels to posts.

- Secure fixing bracket
- For geared and small reels
- Fits 47PR2 reel fixing post
- Can be screwed to wooden posts



Part number	Pack size
47BR1-3	3

Three reel sytems

The practical and flexible way of protecting existing fences, hedges and walls and for subdividing fields or creating temporary enclosures. 3 reel systems come complete and packaged in one carton with the wire pre-wound for easy installation.

500m 6 strand polywire

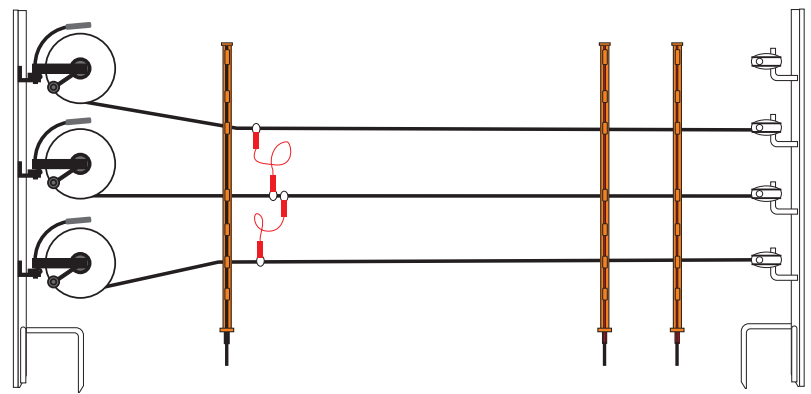
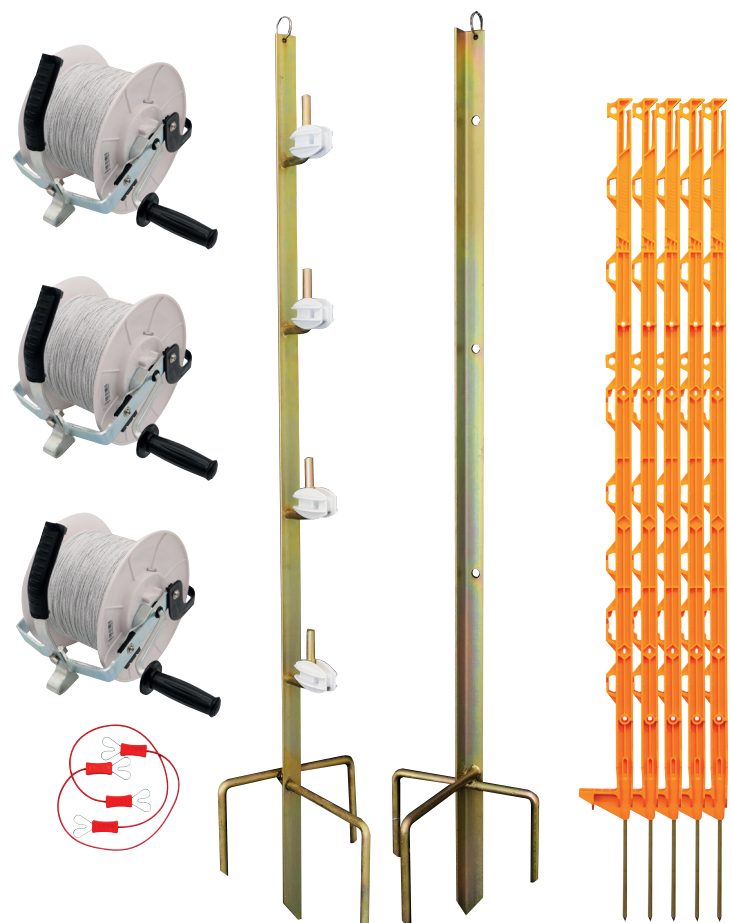
- 3 geared 3:1 reels
- 3 500m spools of 6 strand polywire
- 50 multiwire posts
- 1 reel fixing post (with reel brackets)
- 2 end posts with insulators
- 1 set line connectors

500m braided polywire

- 3 geared 3:1 reels
- 3 500m spools of braided polywire
- 50 multiwire posts
- 1 reel fixing post (with reel brackets)
- 2 end posts with insulators
- 1 set line connectors

400m galvanised wire

- 3 geared 3:1 reels
- 3 400m spools of galvanised wire
- 40 multiwire posts
- 1 reel fixing post (with reel brackets)
- 1 end post with insulators
- 1 set line connectors



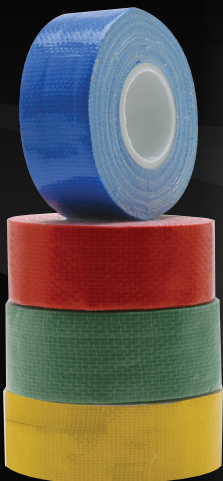
Part number	Type
47TP500CP	500m 6 strand polywire
47TP500S	500m braided polywire
47TP400G	400m galvanised wire

Tail Tape

Colour animal identification tape

- Fibre reinforced tape
- Easy tear off

Part no.	Colour	Length
47P60B	Blue	25m
47P60B-50	Blue	50m
47P60R	Red	25m
47P60R-50	Red	50m
47P60Y	Yellow	25m
47P60Y-50	Yellow	50m
47P60G-50	Green	50m





# Insulators

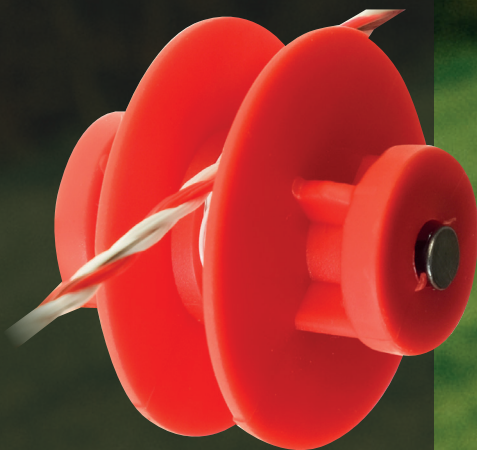
The primary role of an insulator is simple but essential: to hold the fence line securely while preventing any electrical leakage from the conductor to the post or ground. A good insulator grips firmly without damaging the tape, rope, or wire—especially in windy conditions—and avoids sharp edges that could cause wear over time.

## **Corners & Tension Points**

Corner insulators and end tensioners are designed to take the strain at changes in direction or at the end of a fence run. They're especially useful when used with a wooden post in otherwise temporary setups. This allows for better line tensioning and lets you space plastic posts farther apart, ultimately extending the lifespan of your tape or wire.

## **Off-Set Insulators**

Off-set insulators hold the live line away from the post, offering extra clearance from walls, hedges, or existing stock fencing. This setup helps prevent arcing, rubbing, and chewing—common issues with livestock. Off-sets are also a clever way to deter pests and predators. When installed at the base of a chicken run, they act as a 'scare' wire to stop digging animals. Strategically placing them to catch the ears of burrowing pests adds another level of defence.





## Pigtail insulator

Replacement insulator for steel pigtail posts.

- Plated steel pigtail
- For 9mm dia. rod
- For 47P2-10 pigtail posts



Part no.	Pack size
47P5-5	5
47P5-50	50 Bucket



## Live post insulator

Replacement insulator for steel live posts.

- Nylon
- For 47PL32-10 live posts



Part no.	Pack size
47PL66-3	3

## Adjustable insulator

Positionable Insulator for steel posts.

- For posts up to 20mm dia.
- Adjusts to height and position
- For wire and rope up to 6mm
- For 47P3-10 posts



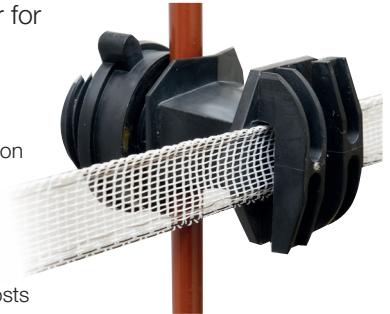
Part no.	Pack size
47P9-20	20
47P9-100	100



## Adjustable tape Insulator

Positionable tape insulator for metal posts.

- For posts up to 20mm dia.
- Adjusts to height and position
- For tape up to 20mm
- For wire up to 3mm
- For 47P3-10 & 47P2-10 posts



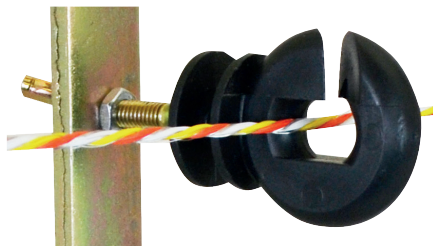
Part no.	Pack size
47P47OB-10-20	20



## Bolt-on ring insulator

Ring insulator for metal posts.

- For rope and wire up to 6mm
- M6 thread
- 35mm bolt



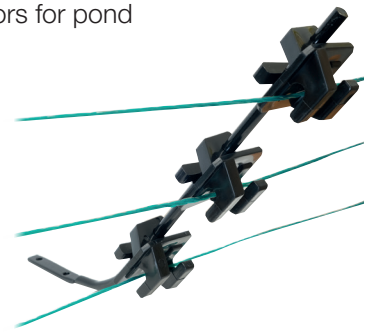
Part no.	Pack size
47P37B-20	20



## Pond brackets & insulators

Steel brackets and insulators for pond protection systems.

- Angled steel brackets
- 3 positionable insulators
- For wire up to 2.5mm
- 200mm & 800mm brackets



Part no.	Pack size	
47GP-5	5	200mm with 3 insulators
47GPI-20	25	Insulators
47GPL-5	5	800mm bracket only



## QUICKCLIP

see page 30 for quick clip metal posts >>

## Pinlock insulator

- For quick clip posts
- For wire up to 3mm



Part no.	Pack size
47FIN00040	25



## Ring insulator

- For quick clip posts
- For wire & rope up to 6mm



Part no.	Pack size
158052	50



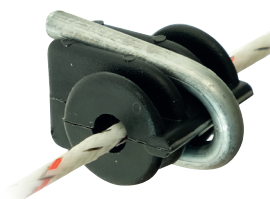


# Insulators for wooden posts

## Staple insulator

Insulator with staples.

- Permanent insulator
- For wire up to 4mm
- Staples included



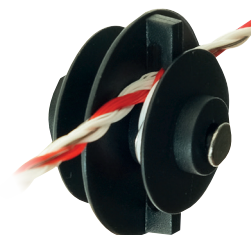
Part no.	Pack size
47P8-50	50
47P8-100	100



## Small bobbin insulator

Nail-on bobbin type insulator with nails.

- Nail through insulator
- For polywire up to 2mm
- Nails included



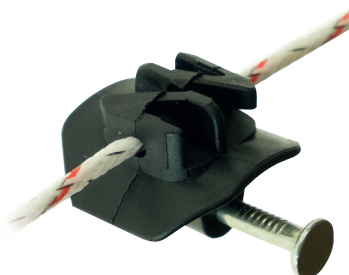
Part no.	Pack size
47P11-50	50



## Saddle insulator

Insulator with integrated nail.

- Integrated moulded nail
- For polywire up to 2mm



Part no.	Pack size
47P13-50	50
47P13-100	100



## Large bobbin insulator

Nail-on bobbin type insulator.

- Nail through insulator
- For wire up to 2.5mm



Part no.	Pack size
47P24-20	20
47P24-100	100



## Ring screw-in insulator

Budget ring screw-in insulator for wooden posts.

- For rope & wire up to 7mm



Part no.	Pack size
14493-50	50



## Paddock Essentials screw-in insulator

Ring insulator for wooden posts.

- Paddock Essentials ring insulator
- For rope & wire up to 7mm



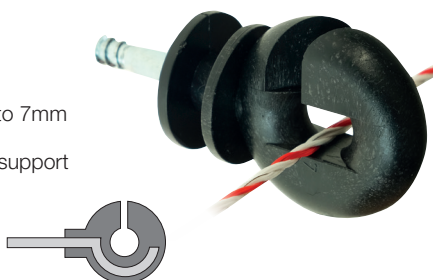
Part no.	Pack size
47C37-25	25
47C37-100	100



## Ring Screw-in insulator

Premium ring insulator for wooden posts.

- Premium quality
- For rope & wire up to 7mm
- Reinforced internal support



Part no.	Pack size
47P37-20	20
47P37-100	100
47P37-200	200



## Off-set screw-in insulator

Extended, stand off ring insulator.

- 200mm extension
- For wire & rope up to 7mm



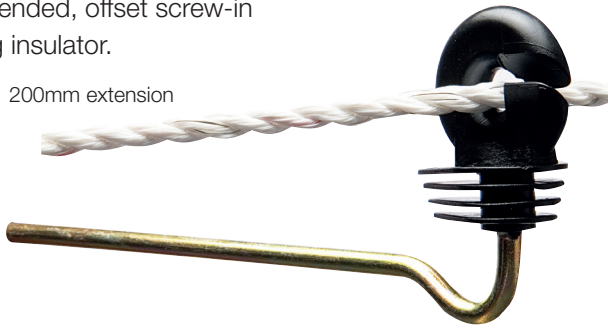
Part no.	Pack size
14937	10



## Offset ring insulator

Extended, offset screw-in ring insulator.

- 200mm extension



Part no.	Pack size
47C37SO-20	20



## Ring insulator with tape fitting

Premium screw-in ring insulator with tape fitting.

- Premium quality
- For wire and rope up to 7mm
- For tape up to 20mm



Part no.	Pack size
47P37S-20	20



## Extended ring insulator with tape fitting

Premium extended screw-in ring insulator with tape fitting.

- Premium quality
- For wire and rope up to 7mm
- For tape up to 20mm
- 150mm extension



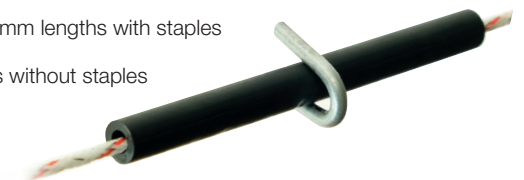
Part no.	Pack size
47P37SL-20	20



## Tube insulator

Insulating tube for permanent fencing.

- For wire up to 3mm
- PVC
- Available 100mm lengths with staples or 2m lengths without staples



Part no.	Pack size
47T1100	100 With staples
47T12	Each 2m length



## Large snug insulator

Nail-on claw type insulator.

- For wire & rope up to 7mm
- Broad insulating back plate



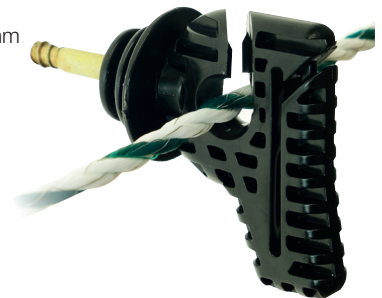
Part no.	Pack size
47P39-20	20
47P39-100	100 Bucket



## horizont combi insulator

Screw-in combination insulator.

- For polywire & rope up to 8mm
- For tape up to 40mm



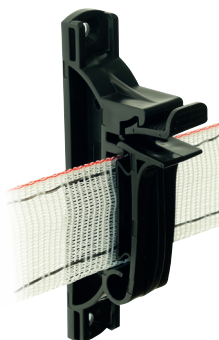
Part no.	Pack size
15390C	25
15682	30
15390EI	80 Bucket



## Paddock tape insulator

Nail-on locking tape insulator.

- Paddock Essentials tape insulator
- For tape up to 40mm
- Thumb locking clip



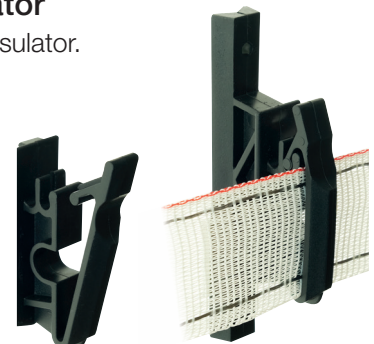
Part no.	Pack size
47C45-25	25



## Nail-on tape insulator

Premium nail-on tape insulator.

- For tape up to 40mm
- For rope up to 6mm
- Locking mechanism



Part no.	Pack size
47P45-20	20
47P45-100	100



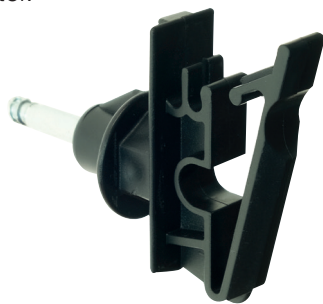


# Insulators for wooden posts, corners & ends

## Screw-in tape insulator

Premium screw-in tape insulator.

- Premium quality
- Integrated screw
- For tape up to 40mm
- For rope up to 6mm
- Locking mechanism



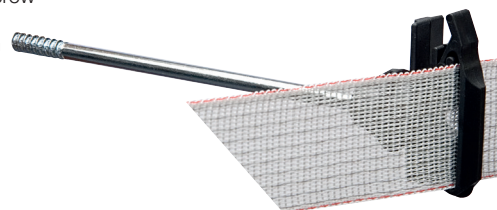
Part no.	Pack size
47P45S-20	20



## Off-set screw-in tape insulator

Premium screw-in, stand-off ring tape insulator.

- Premium quality
- Integrated 150mm screw
- For tape up to 40mm
- For rope up to 6mm
- Locking mechanism



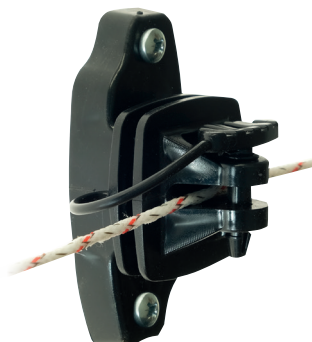
Part no.	Pack size
47P45SL-20	20



## Joulesheild pinlock insulator

Nail on pin lock insulator.

- For wire up to 4mm
- Large surface area
- Heavy duty jaws
- Increased insulation



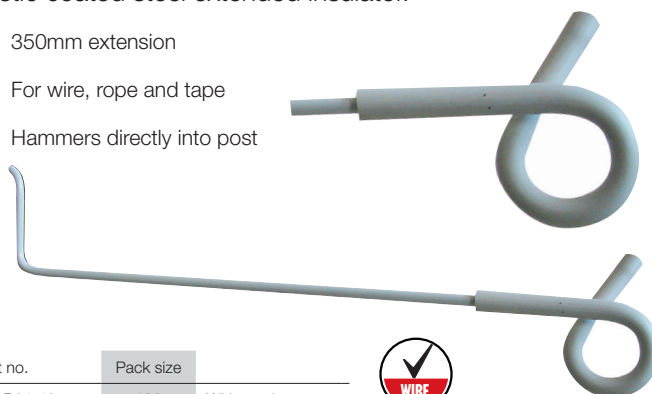
Part no.	Pack size
47FIN00088	200



## Outrigger off-set insulator

Plastic coated steel extended insulator.

- 350mm extension
- For wire, rope and tape
- Hammers directly into post



Part no.	Pack size	With staples
47OR64-10	100	With staples



## Double off-set insulator

Provides off-set fence line on two sides of a fence.

- 300mm from centre point
- For wire, rope and tape
- PVC extrusion
- Includes staples



Part no.	Pack size
47P64-10	10



## Strainer insulator

Egg type insulator for end strainers & corners.

- For wire & rope up to 7mm
- For straining & corners
- Available in ABS plastic or fibreglass reinforced



Part no.	Pack size	Material
47P15-5	5	ABS
47P15-50	50	Bucket ABS
47P15F-5	5	Fibreglass



## Clamp insulator with buckle

Connecting clamp insulator.

- For tape up to 40mm
- Efficiently connects intersecting lines
- Galvanised buckle
- Hook for handles at gateways
- Hinged face plate



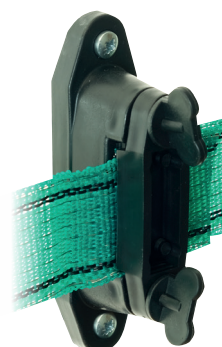
Part no.	Pack size
47P65EB	Each



## Clamp insulator

Clamp insulator with thumbscrews.

- For tape up to 40mm
- Securely clamps tape in place
- Maintains tension in line or at ends



Part no.	Pack size
47P65-5	5



# insulators for corners and ends & accessories

## Corner & end tension insulator

Tensioning insulator for corners & ends.

- For tape up to 40mm
- Applies tension at end posts
- Can be used for free running corners



Part no.	Pack size
47P99	Each



## Pulley insulator

Insulator for corners & end terminations.

- For wire & rope up to 6mm
- Ensures secure corners and ends



Part no.	Pack size
47KS15-3	3



## Joulesheild strain insulator

High tension insulator for corners & ends.

- Applies tension at end posts
- For straining and corners



Part no.	Pack size
47FIN00017	Each



## Insulator chuck

Drill chuck for quick insulator installation.

- For quick installation of ring insulators

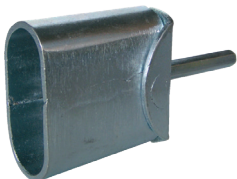


Part no.	Pack size
47CS1E	Each

## Farmer box

Mixed bucket of essentials.

- 97 screw-in ring insulators
- 2 gate handles
- Insulator chuck



Part no.	Pack size
14957EI	Each





# Accessories Gate handles

## One piece plastic gate handle

Non sprung insulating hook.

- High strength polymer



Part no.	Pack size
47P17P	Each



## Economy gate handle

Gate handle with in-line spring.

- Recycled plastic
- Plated spring



Part no.	Pack size
47E17B	5



## Paddock Essentials gate handle

Compression gate handle.



Part no.	Pack size
47C17	Each



## Spring gate handle

Spring gate handle with colour choice.



Part no.	Pack size	Colour
15817LI	Each	Lilac
15817TU	Each	Turquoise
15817HG	Each	Lime green
15817OR	Each	Orange
15817SW	Each	Black



## Tape gate handle

Gate handle with tape buckle.

- Spring gate handle
- For tape up to 40mm



Part no.	Pack size
47P17-T	Each



## Premium gate handle

Spring gate handle



Part no.	Pack size
47P17	Each



## Turbomax gate handle

Polycarbonate gate handle.

- Durable polycarbonate
- Compression spring



Part no.	Pack size
15139E	Each



## Strainrite gate handle

Durable LDPE gate handle.

- UV stabilised
- Yellow LDPE plastic
- Brianex connector for rope  
also available



Part no.	Pack size
47FGH00075	10
47FCL00175	10

Brianex connector



## Gate handle anchor

Anchor insulator for hooking gate handles.

- Can be used for wire, rope & tape



Part no.	Pack size
47P28-2	2



## Paddock Essentials gate anchor

Anchor insulator for hooking gate handles.

- Can be used for wire, rope & tape



Part no.	Pack size
47C28-4	4



## 3 way gate anchor

Anchor insulator with 3 positions

- Galvanised hook plate
- For gate handles and junctions
- T junction installations



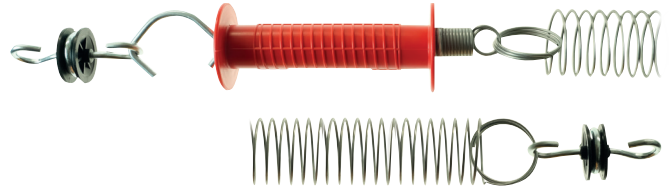
Part no.	Pack size
47GA3	20



## Spring gate

Expandable spring gate kit.

- Extends up to 5m
- Includes handle, spring & anchors
- Not recommended for use with horses



Part no.	Pack size
47P55	Set

## Bungee gate

Stretchy rope gate

- Extends up to 6m
- Includes gate, rope and anchors

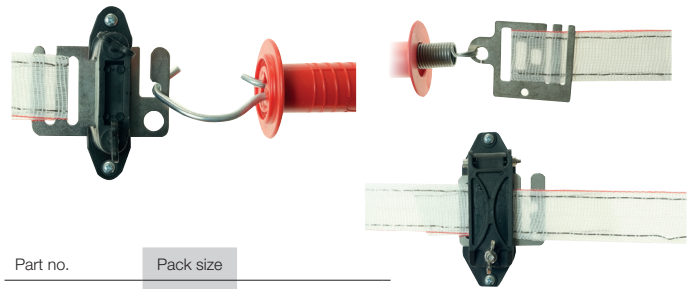


Part no.	Pack size
47P59	Set

## Tape gate

Adjustable length 40mm tape gate kit.

- For gateways up to 6M
- Includes handle, tape & insulators



Part no.	Pack size
47P56	Set

## Warning sign

Plastic clip-on warning sign

- High visibility
- 245 x 130mm



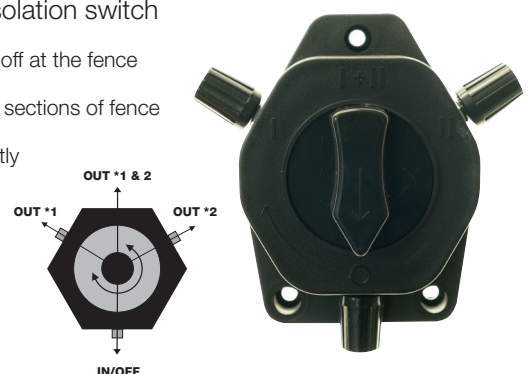
Part no.	Pack size
47P40	Each



## Cut out switch

Dual output isolation switch

- Turn power off at the fence
- Control two sections of fence independently



Part no.	Pack size
47P33	Each

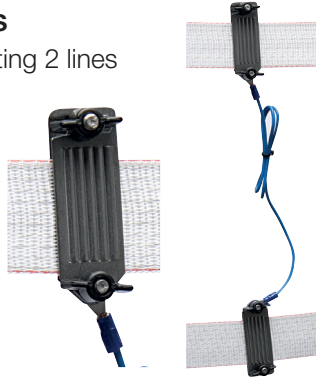


# Accessories **Connectors**

## Tape to tape connectors

Double tape clamp for connecting 2 lines

- Galvanised steel plates
- Connects tape up to 40mm
- Can be used with wire and rope



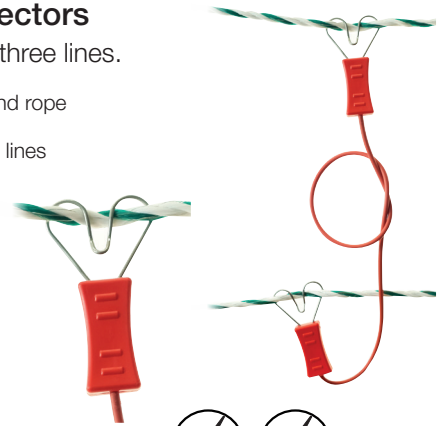
Part no.	Pack size
47C73-2	Set



## Line to line connectors

Connectors for up to three lines.

- Can be use on wire and rope
- Twin pack for up to 3 lines



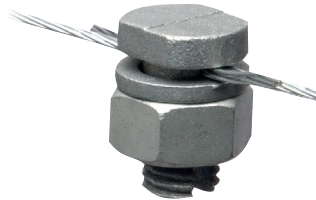
Part no.	Pack size
47C75-2	2



## Bolt connectors

Heavy duty wire connectors

- Galvanised steel
- For steel wire up to 4mm



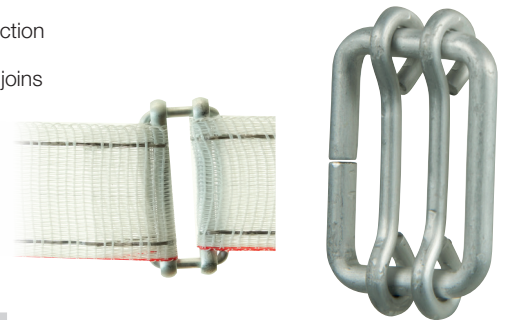
Part no.	Pack size
47C82-5	5



## Aluminium buckle connectors

Tape buckles with sliding lock.

- Light duty connection
- Ensures efficient joins



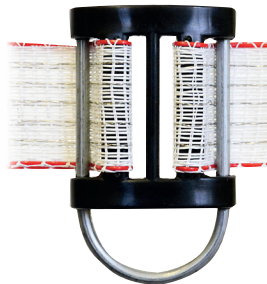
Part no.	Pack size	Size
15163C	10	20mm
15164C	5	40mm



## Connection buckles

Heavy duty tape connectors.

- Composite plastic and steel buckle
- Unique grip bar
- Steel conductor for efficient joins



Part no.	Pack size	Size
47CB20-5	5	20mm
47CB40-5	5	40mm



## Rope connectors

Barrel type rope connector

- For rope up to 6mm
- For joins and ends



Part no.	Pack size
47C92-4	4



## Rope & wire connectors

Bolt and plate connectors.

- Heavy duty
- For joins and ends



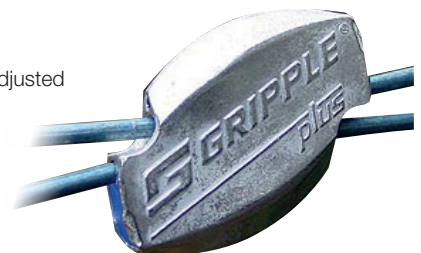
Part no.	Pack size	Up to	Material
47C93-4	4	6mm	Galvanised
47C94-10	10	3mm	Galvanised
47SS93-4	4	6mm	Stainless steel



## Gripple plus

Wire tensioners and connectors.

- Joins & tensions in one
- Can be re-tensioned and adjusted



Part no.	Pack size	Size	Wire
47GRIP0001	20	Medium	2.0 - 3.25mm
47GRIP0009	20	Large	3.25 - 4.2mm
47GRIP0010	20	Barbed wire	



## Gripple T-Clip

Gripple for creating T junctions

- For stock fence, wire and barbed wire
- Hooks onto wire
- For junctions and ends



Part no.	Pack size
47GRIP0006	20



## Torq tensioning tool

Tension tool for Gripples

- 6:1 gear drive
- Up to 400kg tension
- Torque gauge
- Lightweight



Part no.	Pack size
47GRIP0004	Each

## Contractor tensioning tool

Professional tension tool for Gripples

- 10:1 gear drive
- All metal construction
- Quick release cam



Part no.	Pack size
47GRIP0008	Each

## Aluminium tensioner

Ratchet tensioner.

- Steel body
- Aluminium ratchet drum
- For steel wire



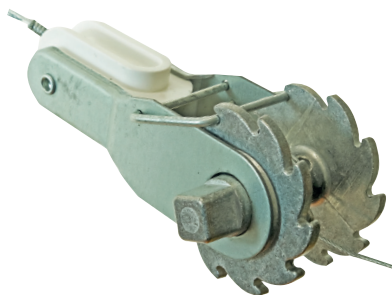
Part no.	Pack size
47T26	Each



## Aluminium tensioner with insulator

Insulated ratchet tensioner.

- Integrated insulator
- Steel body
- Aluminium ratchet drum
- For steel wire



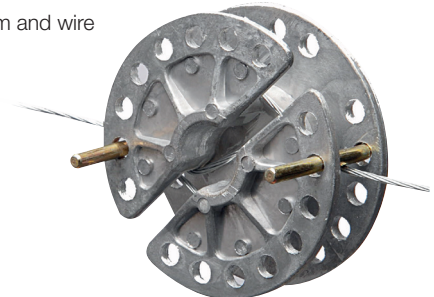
Part no.	Pack size
47T26-I	Each



## Aluminium in-line tensioner

Retro fit in-line tensioner

- For rope up to 6mm and wire



Part no.	Pack size
47P29A-3	3



## In-line tensioner

Plastic tensioner for rope and polywire.

- For rope and wire up to 6mm
- For joins and ends



Part no.	Pack size
47T20	2



## Ratchet tension handle

Spring loaded handle for aluminium tensioners.

- For use with 47T26 & 47T26I



Part no.	Pack size
47FRH00010	Each





## Ezecrimp 5-in-one tool

- Crimps all Strainrite sleeves
- Strips and cuts wire
- Staple puller
- Hardened cutlery grade jaws
- Double action over lever for superior strength crimping



Part no.	Pack size
47FEZ50060	Each

## Ezecrimp 4-in-one tool

- Crimps 2.5mm crimp sleeves
- Strips and cuts wire
- Staple puller
- Hardened cutlery grade jaws
- Double action over lever for superior strength crimping



Part no.	Pack size
47FEZ00050	Each

## Ezecrimp 3-in-one tool

- Barbed, electric, 2.5mm, 3.15mm & 4mm sleeves
- Strips and cuts wire
- Staple puller
- Heat treated tool steel jaws
- Double action over lever for superior strength crimping



Part no.	Pack size
47FEZ00055	Each

## Crimp sleeves

- Fast, strong, easy jointing
- Water resistant
- All weather grit adhesive



Part no.	Pack size	mm	Use with
47FWC00014	50	2.7	Electric fencing 1.6 - 2.7mm wire
47FWC00018	50	2.5	2.5mm barbed wire
47FWC00024	100	2.5	1.6 - 2.5mm fencing wire
47FWC00034	50	3.15	3.15 fencing wire & 1.6mm HT barbed wire
47FWC00044	50	4.0	3.55 - 4mm fencing wire & 2mm HT barbed wire

## Staple puller

- Staple puller
- Wire cutter
- Ergonomic design



Part no.	Pack size
47FKX00165	Each

## Easy wire puller

- Hands free tie off & staple
- Tensions wire and mesh on straining posts
- Prevents wire damage



Part no.	Pack size
47FWT50010	Each

## Knipex wire cutters

Exceptional cutting with minimum effort

- 64HRc edge hardness
- Cuts bolts, nails etc. up to 5.2mm
- Scalloped or straight jaws
- Forged chrome vanadium
- Oil hardened



Part no.	Pack size	Jaw type
47FKX00010	Each	Scalloped
47FKX00011	Each	Straight

## HT wire cutter

Wire tensioners and connectors.

- Scalloped jaw
- Ergonomic handles
- Cuts up to 4mm wire



Part no.	Pack size
47FKX00060	Each

## Fencing pliers

- Cuts & twists
- Single tooth jaws for lifting & pulling staples
- Hardened cutlery grade jaws



Part no.	Pack size
47FKX00152	Each

## Easycut chisel

Designed for fence construction

- Robust design
- Ergonomic handle



Part no.	Pack size
47FCI00020	Each

## Wire twister

- Plated steel
- Compact pocket carry



Part no.	Pack size	Length
47FTW00020	Each	78mm
47FTW00030	Each	106mm

## Standard chain strainer

- Wear resistant grips
- Iron jaws
- High tensile pivot bolt
- 27mm dia. one piece handle



Part no.	Pack size
47FCS00700	Each

## Hook type boundary strainer

- 6m chain & hook
- Recommender for use with strainer boards



Part no.	Pack size
47FBY00020	Each

## Netting strainer board

900mm wedge type boards

- Press formed steel boards
- Compatible with most netting and stock fencing



Part no.	Pack size
47FFNB00014	Each

## Hotline Spinning jenny

High tensile wire dispenser

- Galvanised
- Solid ground spike
- Capacity 625m



Part no.	Pack size
47SJ25	Each

## Hotline fence pliers

- Cuts and twists
- Staple puller



Part no.	Pack size
47FP25	Each



# Poultry netting

Electric poultry netting is an ideal option for those keeping a small number of birds in a domestic setting. It offers a solution that is easy to move and store, with a low visual impact.

The net is made from polyurethane, with metal filaments running through the horizontal strands (except for the bottom base line). It is mounted on integral fibreglass posts. To 'charge' the net, an energiser is connected to both the net and the ground via an earth stake. This forms an open circuit. When an animal touches both the net and the ground, it completes the circuit and receives a shock. Because of this, the net does not need to be installed in a loop—it can be set up in a straight line if desired. The energiser delivers a high-voltage pulse approximately once every second.

Foxes, like most animals, tend to investigate unfamiliar objects in their environment. It is at this point that the shock is delivered. Although the standard height poultry net is not especially high, once an animal receives a shock, the net becomes a strong psychological deterrent, making it unlikely the animal will attempt to breach it again. If there are tall, athletic foxes in your area, or you just want extra peace of mind, we now have a 1.45m poultry net!



## Expert insight

As the live lines of poultry netting are very close to the ground they are susceptible to 'leakage'. This is where undergrowth completes the loop and draws power from the fence to ground. We recommend a minimum of 3,500v on your fence to provide an effective deterrent. The higher the joule rating on your energiser the greater level of 'leakage' your system will cope with and maintain an effective voltage. The bottom line is not live but all other horizontal lines are. The key is trying to keep the live ones clear of any external contacts. This can be

difficult, especially on undulating ground as your bottom line is effectively covering a shorter linear distance to the top line, which causes the net to sag. You may need to add extra posts and/or corner posts to achieve better tension. In some cases keeping the lowest live line free from vegetation is impossible and isolation from the live matrix may be needed. This is achieved by simply cutting the line at the first and last post. You can reconnect if needed by using the ferrules in the supplied repair kit.

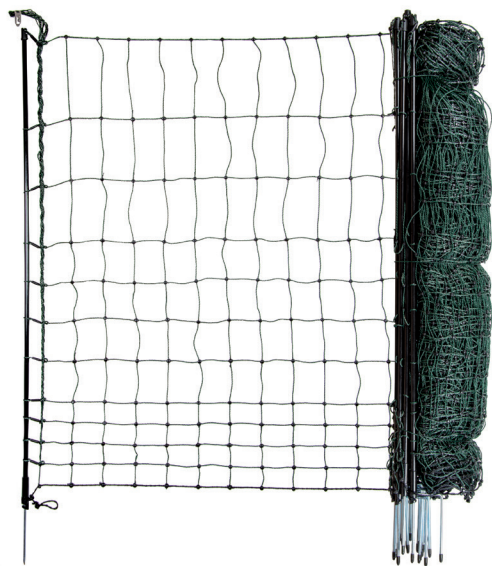
*Kayleigh*



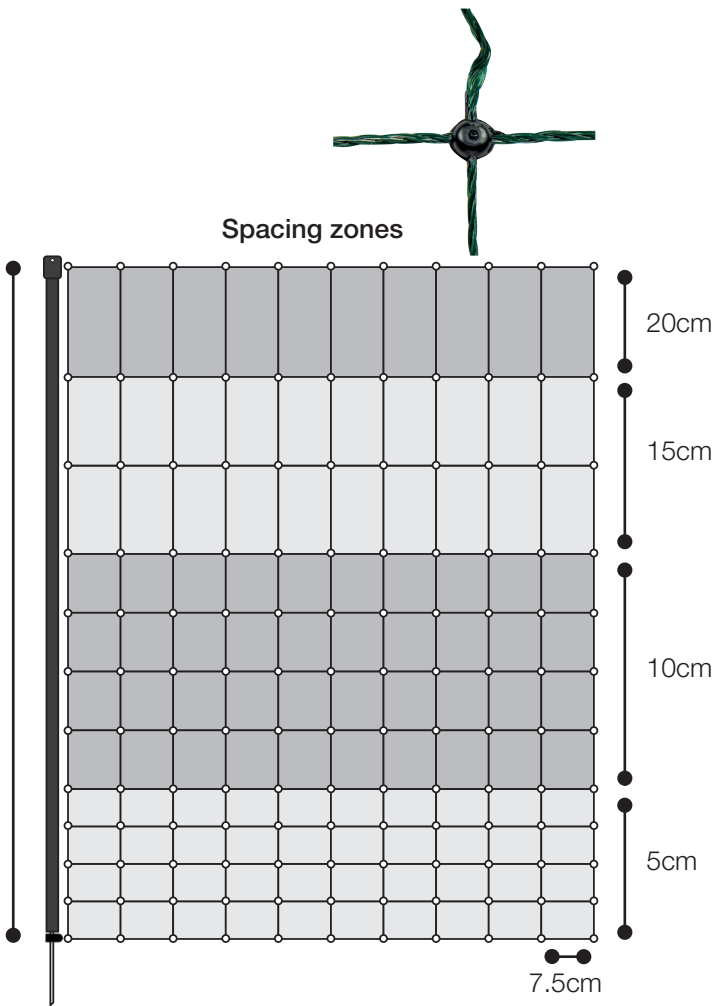
**Poultry netting**

Stranded poly net with posts. Stainless steel conductors on horizontal strands.

- Green net
- Black 13mm dia. fibreglass posts
- Includes guy wires and ground pegs
- Repair kit



Part no.	Length	Posts	Colour
47MH5LG	50m	15	Green
47MH2LG	25m	9	Green



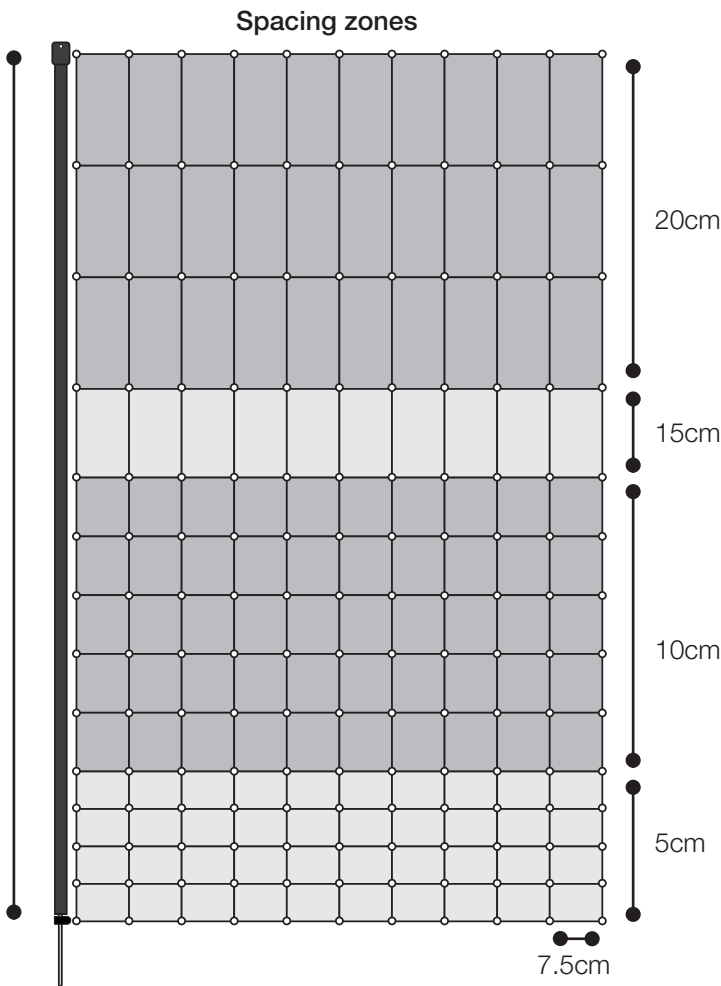
**High poultry netting**

Stranded poly net with posts. Stainless steel conductors on horizontal strands.

- Green net with white upper horizontals
- Black 19mm dia. double spike plastic posts
- Includes guy wires and ground pegs
- Repair kit



Part no.	Length	Posts	Colour
14980	25m	9	Green & white





# Netting Electrified netting

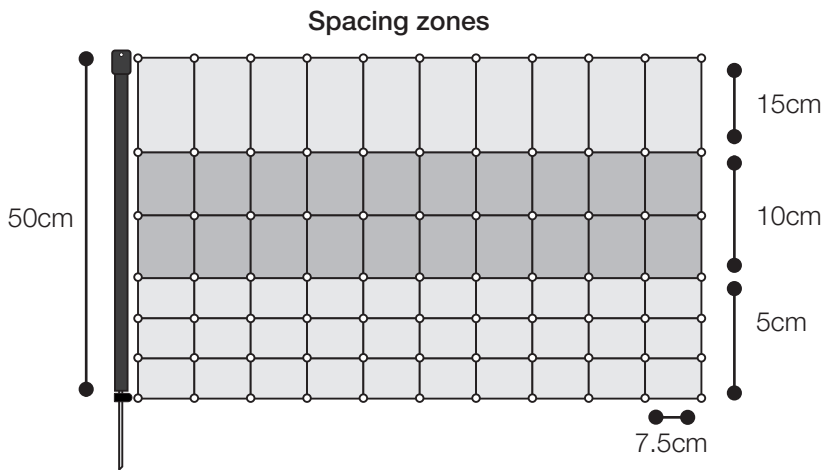
## Rabbit netting

Stranded poly net with posts. Stainless steel conductors on horizontal strands.

- Orange net
- White 13mm dia. plastic posts
- Includes guy wires and ground pegs
- Repair kit



Part no.	Length	Posts	Colour
MR5LO	50M	14	Orange



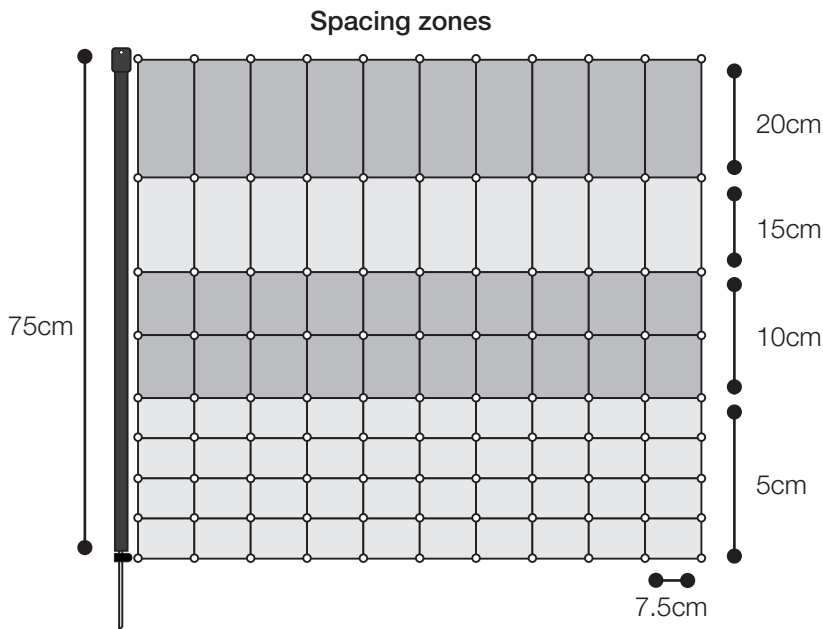
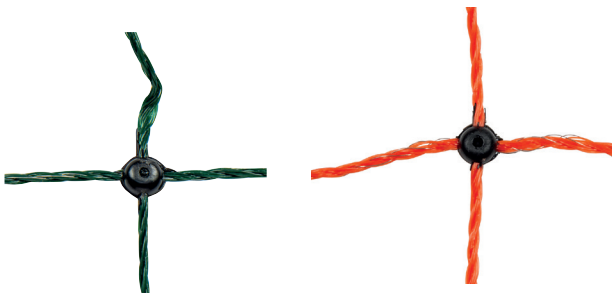
## Super rabbit netting

Stranded poly net with posts. Stainless steel conductors on horizontal strands.

- Orange or green net
- White 13mm dia. plastic posts
- Includes guy wires and ground pegs
- Repair kit



Part no.	Length	Posts	Colour
MSR5LG	50M	14	Green
MSR5LO	50M	14	Orange



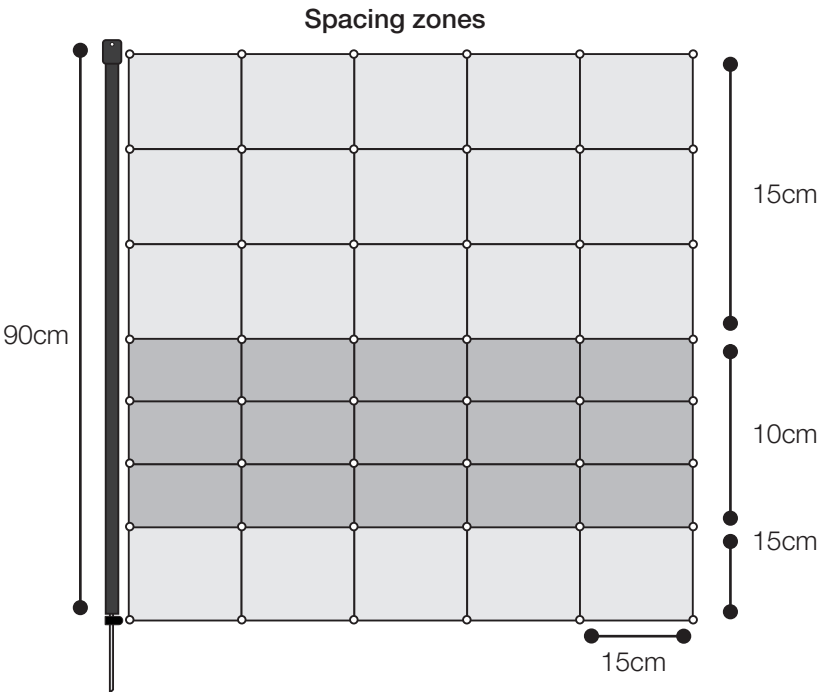
**Sheep netting**

Stranded poly net with posts. Stainless steel conductors on horizontal strands.

- Orange net
- White 13mm dia. plastic posts
- Available with single or double spike posts
- Includes guy wires and ground pegs
- Repair kit



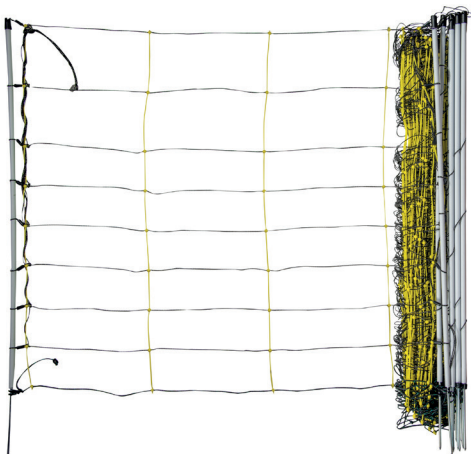
Part no.	Length	Posts	Colour
MS5LO	50M	14 single spike	Orange
14515	50M	14 double spike	Orange



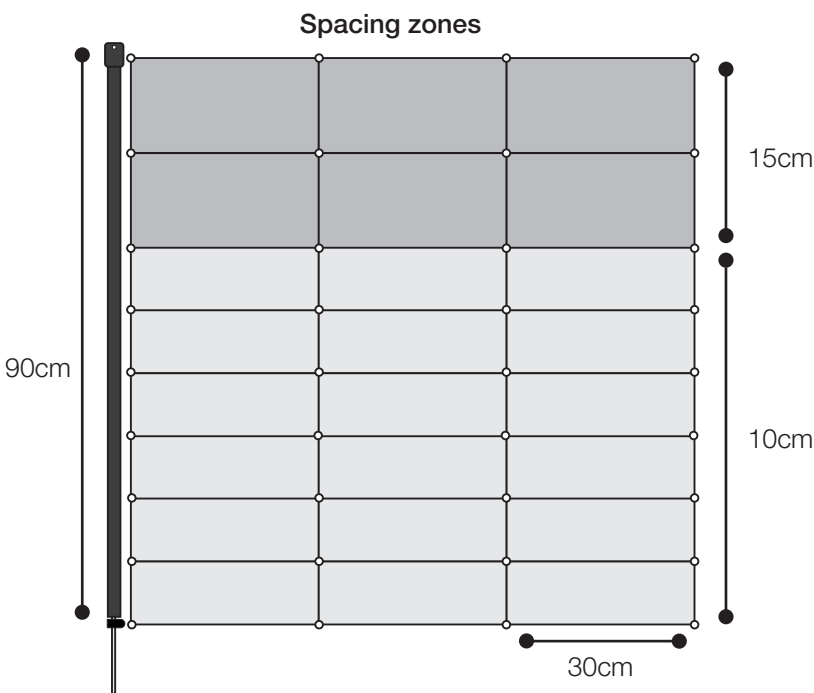
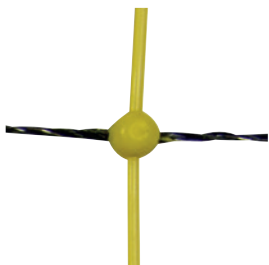
**Livestock semi rigid sheep netting**

Stranded poly net with posts. Extruded semi rigid vertical strands aid the net to stand upright. Stainless steel conductors on horizontal strands.

- Black & yellow net
- Extruded semi rigid vertical strands
- White 13mm dia. plastic posts
- Available with single or double spike posts
- Includes guy wires and ground pegs
- Repair kit



Part no.	Length	Posts	Colour
18011	50M	14 single spike	Black & yellow
18013	50M	14 double spike	Black & yellow





# Netting **Netting accessories**

## Spare fibreglass posts

Replacement/additional fibreglass poultry posts.

- Fibreglass
- 13mm diameter
- Double spike



Part no.	Pack size	Size
47PMPBL-FP	Each	110cm

## Heavy duty poultry net posts

Great for corners and adding structure.

- Plastic
- 19mm diameter
- Double spike

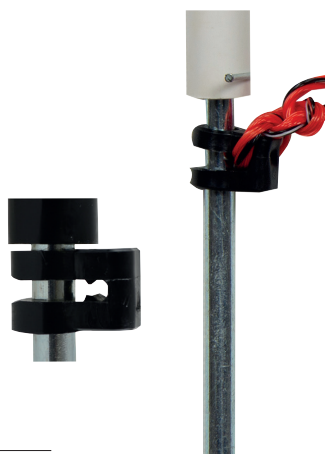


Part no.	Pack size	Size
47CP112	Each	112cm
14993	Each	145cm (includes 2 post clips)

## Post wire retaining clip

Replacement wire retainer for post spikes.

- For 13mm net posts



Part no.	Pack size
47BCCLIP	Each

## Post clips

Clips for the netting post shaft which can be used to lift sections of netting to reduce sagging.

- Simple twist fitting



Part no.	Pack size	Size
47PC3-10	10	13mm
47PC15-10	10	15mm
47PC19-10	10	19mm

## Warning sign

Flexible PVC warning sign

- High visibility



Part no.	Pack size
47N40	Each

## Pegs & skewers

Plastic pegs for corner guy wires & steel skewers for anchoring bottom line.



Part no.	Pack size
47SK1	Each
47PEGSPRS	Pair

## Repair kits

Wire & ferrule kit for mending breaks.

- 5 Brass crimps
- Live and non conductive twine
- 2 Bottom clips
- 2 post top wire retainers



Part no.	Pack size	Colour
47RKG	Each	Green
47RKO	Each	Orange

## Repair ferrules

Brass connectors for repairing wire breaks.

- Brass crimps
- Efficient electrical connection

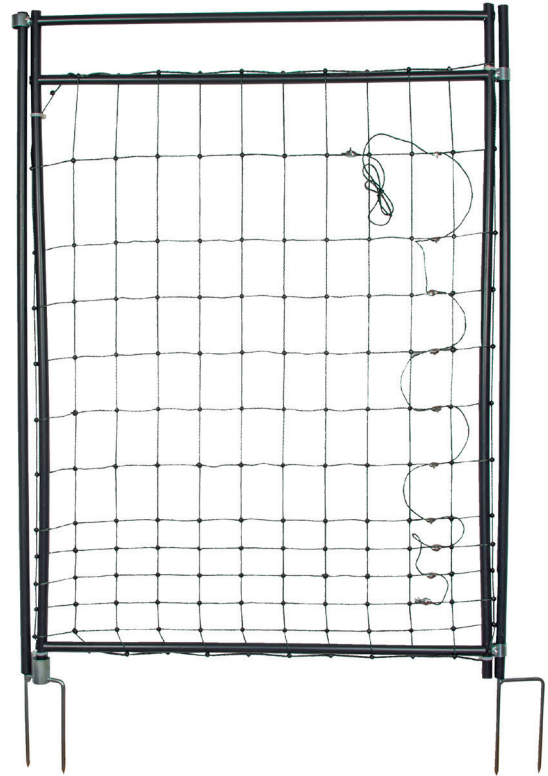


Part no.	Pack size
47NETFEU-10	10

## Rigid hotgate netting gate

Framed rigid netting gate for poultry netting. Hinged access with insulated top bar allows easy access to your netting enclosure without the need to turn off your energiser.

- Allows easy access without disconnecting your energiser
- Add to any poultry net system
- Double spike gate posts
- Green
- 1.2m high, 1m wide



Part no.	Pack size
47RGS-120	Each

## Flexible hotgate for 1.45m high poultry netting

The original netting gateway. Flexible netting access.

Allows easy access without disconnecting your energiser

- Add to any poultry net system
- Gate post and dock system
- Double spike gate posts
- Green
- 1.45m high, 1.2m wide



Part no.	Pack size
47PGS-4	Each



# Netting **Non electrified**

## FIX boundary netting

Lightweight mesh with fibreglass posts.

- 90cm high
- Lightweight
- Close meshed
- Moulded tread-in posts
- Corner guy twines and pegs
- Low visual impact
- Great for pets and camping



Part no.	Length
14610-20	20m

## Plastic barrier mesh

- Robust and flexible
- Can be mounted on a range of posts



Part no.	Length
14634GR	50m
14634OR	50m



Poultry netting kit

Complete electric fence kit. Electric netting kits are the ideal option for those keeping a small amount of birds in a domestic setting and prefer a solution which can be moved and stored easily and has a low visual impact. The poultry net has 15 integral posts. Electrified poultry netting kits provide an effective deterrent against most predators and can be powered from 230v or from 12v battery. All you need to add is a 12v battery or if powering from the mains, a length of HT lead to take power from from your indoor power supply to the fence.

Includes

- Gemini energiser
- Netting with posts
- Earth stake
- Rigid gateway
- 4 heavy duty posts
- LED fence tester

Part no.	Length	Energiser
47GPK50	50m	47HLC120 Gemini 120
47GPK25	25m	47HLC80 Gemini 80



Equine starter kit

Complete kit, perfect for small enclosures or paddock divisions of up to 200m.

Includes

- Shrike energiser with batteries
- 200m 10mm tape
- 10 plastic posts
- Earth stake
- Audible tester
- 2 gate handles with anchors
- Tape end tensioners
- Warning sign

Part no.	Length
47HK100	200m





# Water pumps

There is an increasing requirement for land owners and managers to keep livestock away from watercourses. Diffuse water pollution from agriculture accounts for 61% of nitrogen entering rivers, up to 40% of phosphorus and 75% of sediment. Fencing off watercourses protects from river bank erosion and relieves poaching so contributes greatly to cleaner water and promotes growth of healthy native flora and fauna. We can all agree that this is great for our environment, but for land owners who rely on watercourses to water their livestock, it can be very problematic. Our battery and solar water pumps have been developed in response to this problem. We have been working with livestock farmers, Natural England and the Catchment Sensitive Farming initiative (CSF) to provide an easy, reliable and self sufficient way of providing water to livestock when watercourses are fenced off. We have been manufacturing electric energisers for over 40 years and so we are accustomed to making and supplying products which need to operate out in the elements, in remote areas and from independent power sources. Like our energisers, the system needed to be reliable, easily transportable and capable of catering for large numbers of different types of animals.

The solar and battery kits easily integrate with all standard water troughs so there is no need to train animals as with traditional pasture pumps which are also limited in the number of animals they can supply. The solar kit has supplied groups of 90 cattle with all their water requirements, without any need to change or charge batteries. Although, the kit is marginally more expensive than a pasture pump, it is far more flexible in application and compared with the cost of mains water, they are very economical.





## Battery & solar water pump kit

The water pump kits are simple 12v pumping systems based upon proven water-pumping technology which allows the transference of large volumes of water. The trough is fitted with float switch which turns on the submersible pump as the water level drops. There is no need for balancing tanks or header tanks, just a standard water trough. The pump is connected to 30m of hose which feeds back from the water source to the trough. The kit is powered by 12v battery\* which sits in a weatherproof control box. The basic solar option includes a high efficiency 60w solar panel.\*\* The system is compatible with a solar array of up to 300w. **Example: for 4 hours run time per day we would recommend 3 x 60w solar panels.**

- Control box with battery level indicator
- Float switch
- 12v submersible pump with 30m lead
- 30m hose
- 60w panel with stand (solar kit)

\*Battery not included. We recommend a minimum of 75ah.

\*\*Depending on daily run time and time of year, a 60w panel alone may not be sufficient to achieve complete self sufficiency. Additional panels may be required.



Part no.	Product
47SPK60-300	Pump kit with 60w panel
47BPK30-300	Pump kit only
47SP60W-S	Panel only

## Capacity

Water requirements vary greatly for livestock and are influenced by temperature, humidity and feed source. Always make allowances for this. The majority of grazing animals are herd animals and will want to drink socially together so trough size should allow for this. Increasing head will reduce pump output. At 10m head the pump will run at approximately 65% of peak output. Increasing the distance the pump works over will also increase head and therefore reduce pump output. Solar recharge times vary with weather conditions. The below recommendations allows for 4 hrs recharge time daily and so outputs in summer are likely to be much higher. If not using solar option the periods between battery charges will depend on usage.

Head (m)	0	1	2	3	4	5	10
Output litres per hour	320	305	300	285	275	265	210

	Cattle<200kg	Cattle>400kg	Dry cows	Milking Beef	Milking Dairy	Horses	Sheep
Approx. Water Requirement	10-35L	30-50L	30-50L	70-80L	80-200L	30-50L	2-5L
Capacity per pump	up to 120	up to 40	up to 40	up to 17	up to 15	up to 40	600

	20kg pigs	50kg pigs	90kg pigs	Pigs dry sow	pig milking
Approx. Water Requirement	1L	5L	9L	9-18L	18-36L
Capacity per pump	up to 1200	up to 240	up to 133	up to 130	66



# vision range

The Vision Range 25x zoom camera system includes a pre-configured camera and a point to point link to extend your home router connection. The camera has a 360 degree rotation, 25x optical zoom and can be viewed from your mobile device. The powerful point to point link extends your home router connection as far as 5km. Up to 3 additional cameras can be added to receiving station and further receivers can be installed in other locations.

## Complete wireless camera system with 25x zoom

25x zoom camera with point to point antenna kit for wireless connection of up to 5km from home router.

- Pre-configured kit for easy installation
- Wireless connection from home router to farm buildings with range up to 5km
- Remote view from mobile devices
- 25x optical zoom and 16x digital zoom provide close up views over expansive areas
- High quality 4k imaging
- Excellent low-light performance
- 64GB micro SD card installed (compatible up to 256 GB)
- Expansive night view with up to 100 m IR distance
- Management via the horizon-live application (iOS & Android)
- 230v power supply required for the camera



Part no.	Pack
47CAMX25	Kit





## 25x zoom camera with wall bracket

Additional 25x zoom camera for wireless camera system.

- 25x optical zoom and 16x digital zoom
- High quality 4k imaging
- Expansive night view with up to 100 m IR distance
- Management via the horizon-live application (iOS & Android)



Part no.	Pack
47HOR100124	Each

## Fixed bullet camera

Fixed position camera with digital zoom.

- PoE /12V DC
- White light with 40 m range
- Resolution : 4K 2688 \* 1520
- 112° pan
- 61° tilt
- Optional : micro SD card up to 256GB



Part no.	Pack
47HOR100121	Each

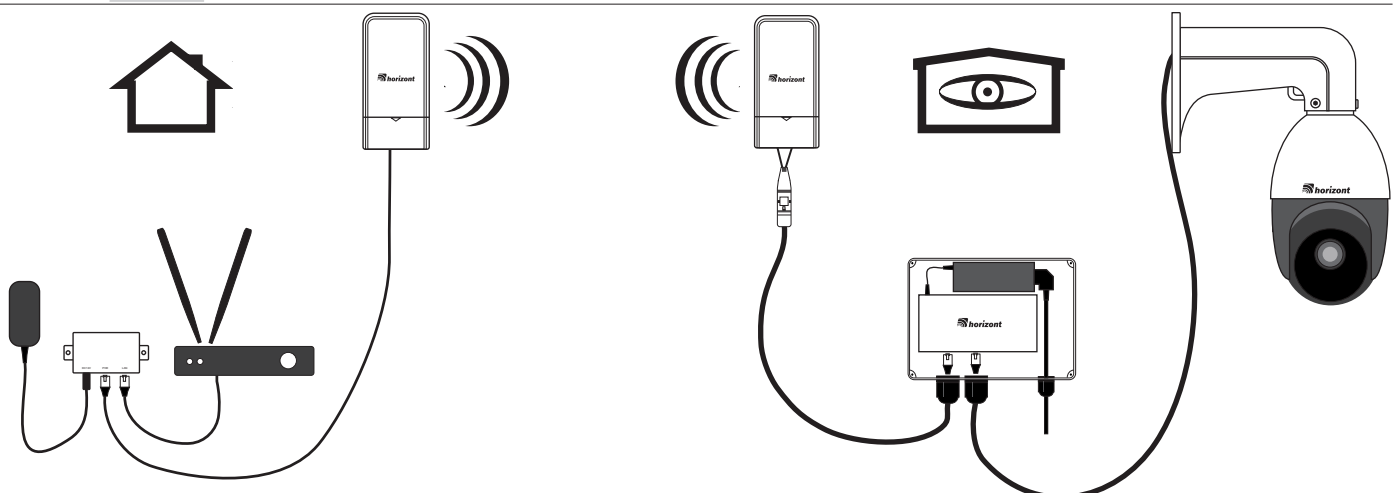
## Remote receiver kit for camera system

Allows additional cameras to be added in other buildings.

- PoE switch for up to 4 cameras
- 1 x wireless bridge
- Weatherproof enclosure
- 1 x 10m RJ45 network cable



Part no.	Pack
47CAMAKT	Kit





# Torches and lighting - Explorer

## Explorer torch

Dual beam LED torch with soft feel case.

- 10w high power LED
- Lithium battery
- Two main beam levels
- Flashing mode
- 15 LED work lamp
- Up to 15 hour battery life
- Mains charger
- Carry strap



Part no.	Pack size
47L200L	Each

## Explorer mini solar torch

Multi functional torch with solar charging.

- Dual level main beam
- Fold up work light
- Solar charging
- 3.7v 3000mAH lithium battery
- Mini USB port



Part no.	Pack size
47L100L	Each

## Explorer head torch

Multi functional torch with solar charging.

- OB LED band light
- XPE LED side light
- Touch free sensor control
- 5 lighting modes
- Max 350 lumen
- USB charging
- Adjustable head band



Part no.	Pack size
47L350	Each



# Earthing

## Grounding Matters: Completing the Circuit

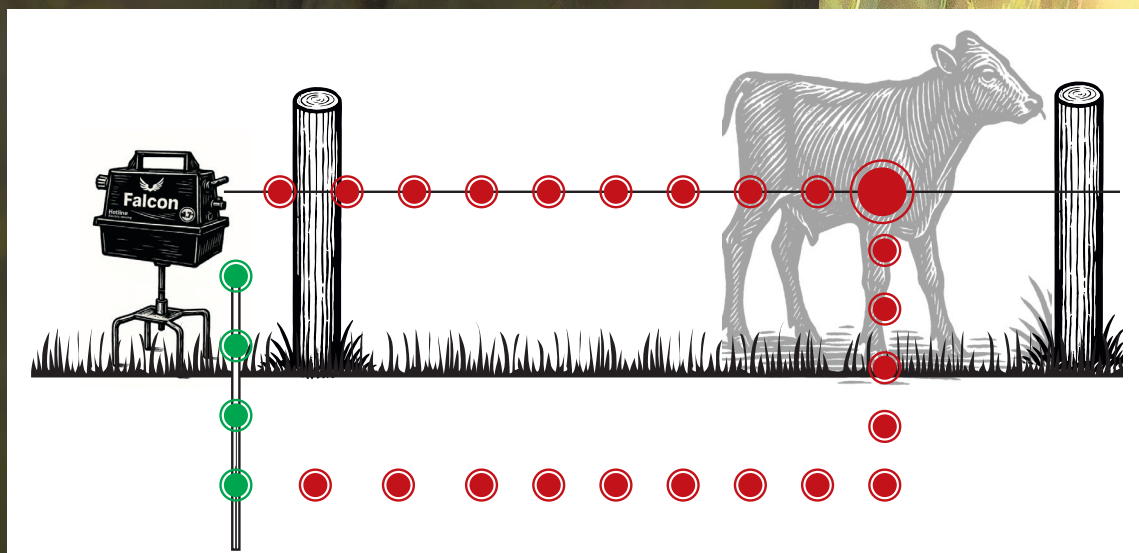
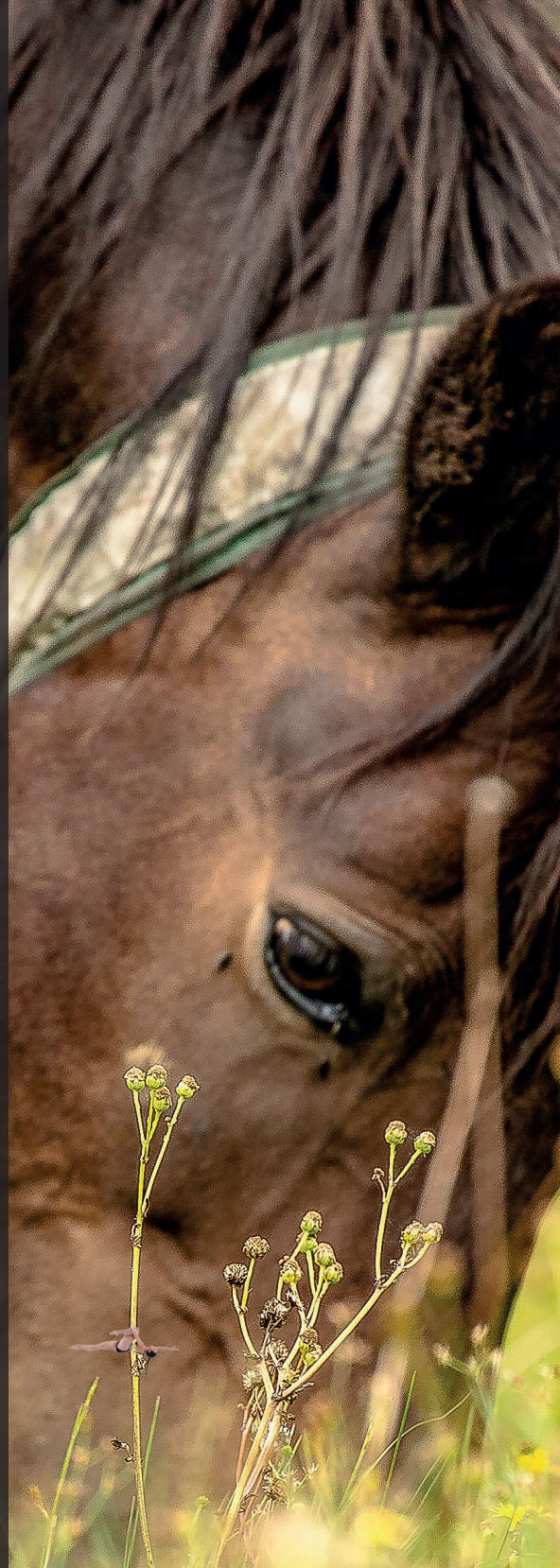
Earthing is one of the most critical—and often most overlooked—parts of an electric fence system. Many people associate “grounding” with household electrics and see it purely as a safety measure. In electric fencing, however, it’s half the circuit.

The fence line delivers the electrical pulse. The ground system completes the loop. When an animal touches the live wire, electricity travels through its body into the earth—then back through the grounding system to the energiser, triggering the “shock.”

While the fence line uses highly conductive filaments, the return path—the soil itself—is much less predictable. Ground conductivity varies based on moisture, soil type, and geological conditions. In dry weather, the earth may conduct poorly, reducing fence performance.

### Best Practices for Grounding

- Try to install earth stakes in damp soil where possible. Use at least one 1-metre stake, driven at least 1m deep to reach below the dry topsoil.
- For longer fences or poor soil conditions, add more stakes, spaced c.2 metres apart and linked with wire.
- The better your grounding, the more effective your fence. You’ll find suitable earth stakes on page 15.

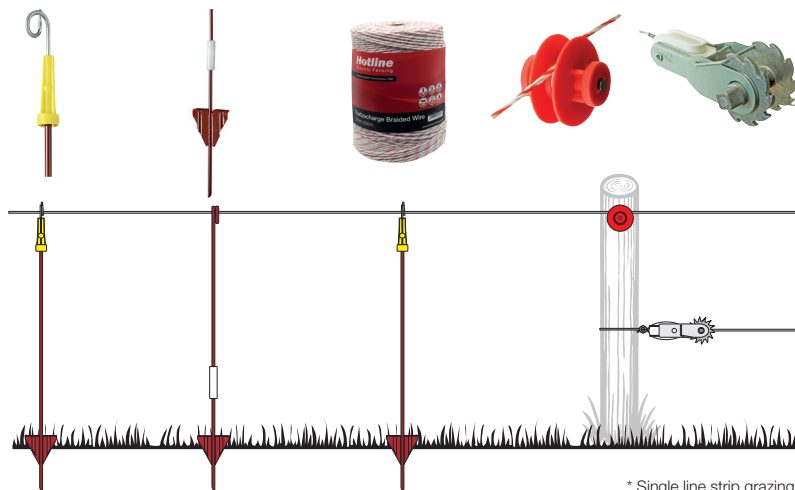
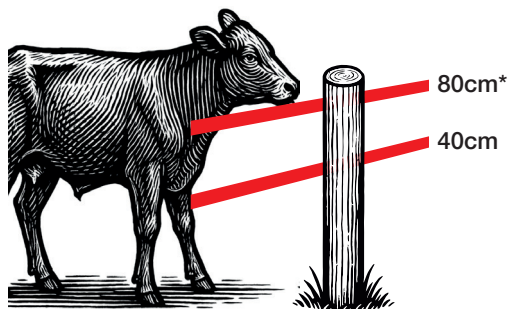




# Guidance Line height & product suggestions

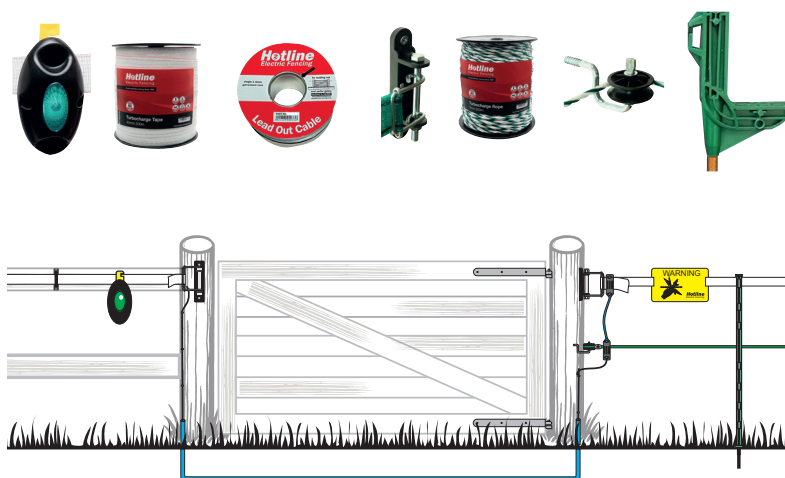
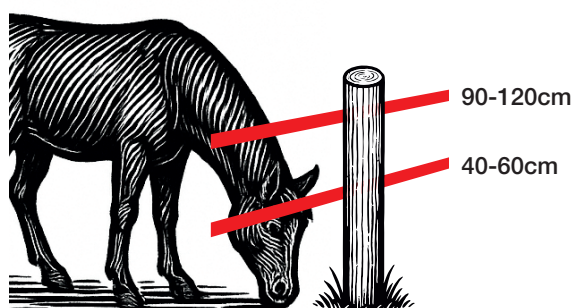
## Cattle

Behaviour: Leaners and pushers.



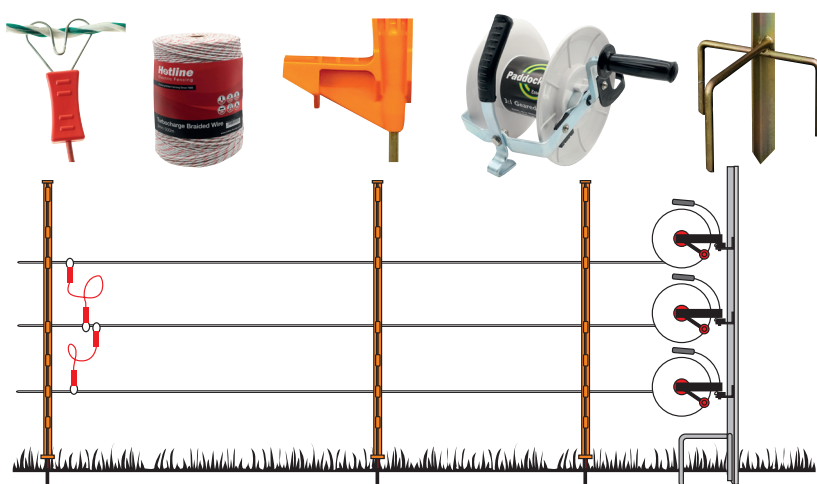
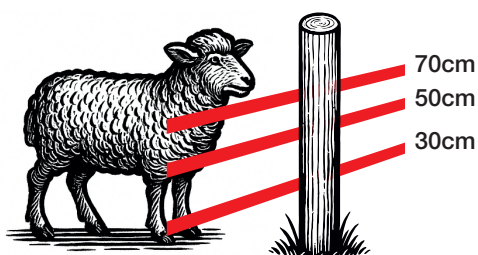
## Horses

Behaviour: Flight animals—need high visibility and spacing to prevent entanglement.



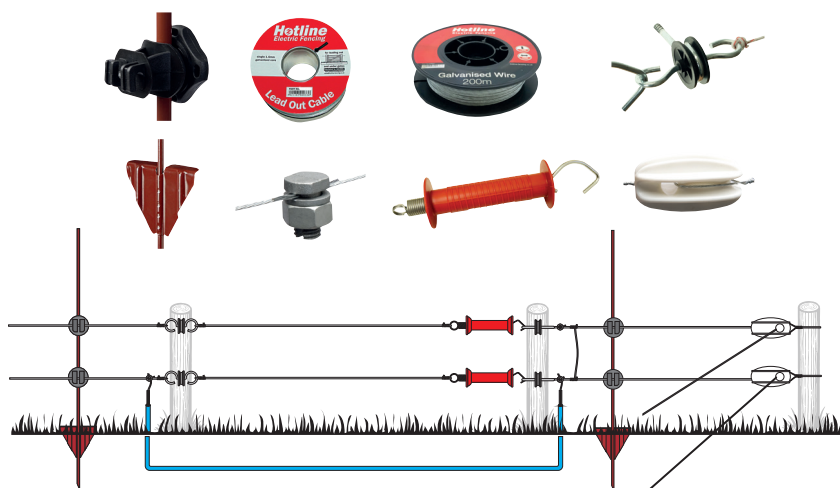
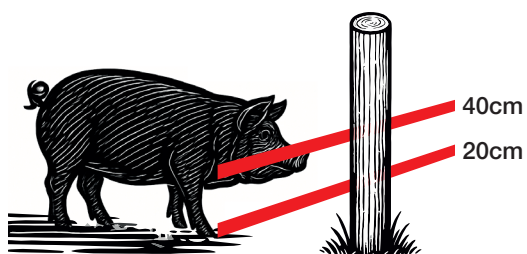
## Sheep & goats

Behaviour: Sheep insulated due to wool; goats are climbers and escape artists.

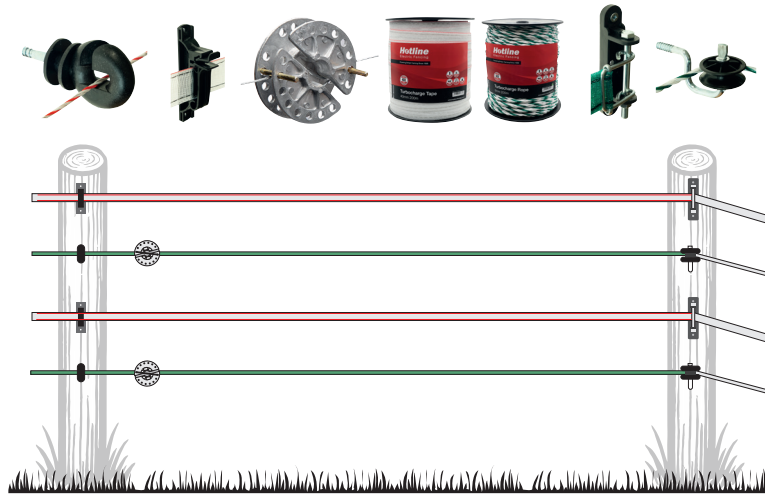


## Pigs

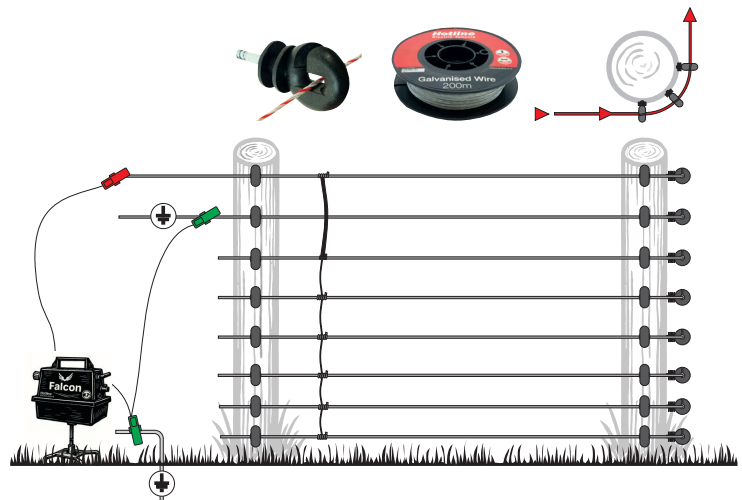
Behaviour: Rooters and pushers. Test fences low to the ground.



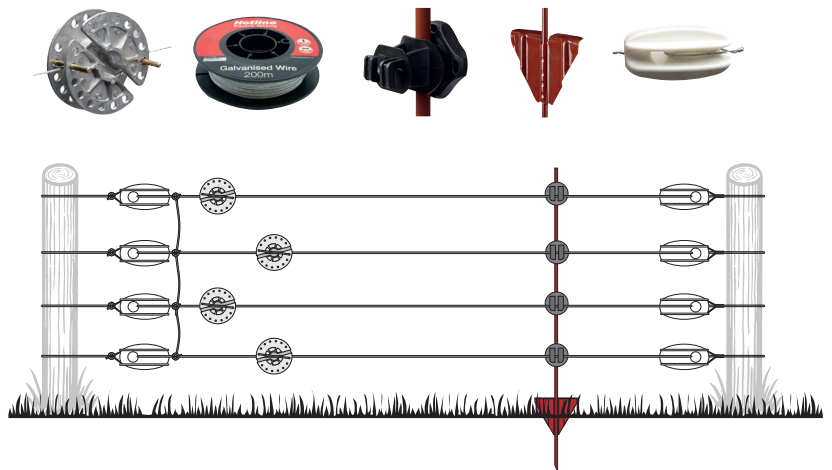
Behaviour: Jumpers—need taller fences and psychological barriers with good visibility.



Behaviour: Investigate with the nose first and may re test that the fence is on.



Behaviour: Strong persistent diggers.  
Investigate with nose.



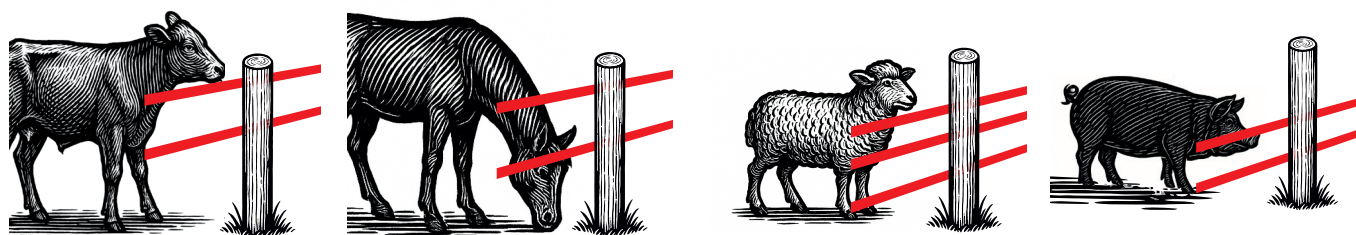
Behaviour: May dig but quick learners when shocked.





# Guidance **Choosing products**

**Step 1: What animal?** This defines how many lines are required and at what spacings.



## Step 2: Which fence line? Tape rope or wire?

The main differences are the level of visibility each offers and what is best required for animal type.

	POLYWIRE	GALV WIRE	TAPE	ROPE	NETTING
DAIRY					
BEEF					
SHEEP					
HORSE					
PIG					
POULTRY/FOX					

## Step 3: Which fence line is suitable for your length of fence?

Greater metal content and/or inclusion of mixed metal combining strength and high conductivity allows the pulse travel further.

	3 STRAND POLYWIRE	6 STRAND POLYWIRE	9 STRAND POLYWIRE	GALVANIZED WIRE	Paddock TAPE	TURBO TAPE	Paddock ROPE	TURBO ROPE	NETTING
>500M									
500-1000M									
1000-2500M									
2500-5000M									
5000-10000M									

## Step 4: Which energiser?

Higher joules power longer fences. More powerful energisers require larger power sources.

	BATTERY POWERED				MAINS AND (12V) BATTERY			MAINS			
	HLB100	HLB150	HLB300	HLB500	HLC40	HLC80	HLC120	HM300	HM500	HM700	HMI2500
Input>	3/12v	6/12v	9/12v	12v	12/230v	12/230v	12/230v	230v	230v	230v	230v
>500M											
500-1000M											
1000-2500M											
2500-5000M											
5000 +											

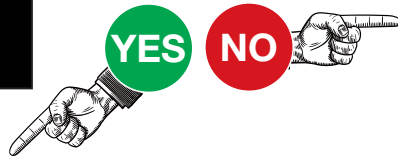
If you are having problems with your fence the check list below should help you find the problem. Having a fence tester will help rule out elements of your system as problematic. It is not advisable to test the fence by touching it. Your footwear will insulate you and may misrepresent the true strength of the shock. And it will probably hurt.

**Is the energiser turned on?**



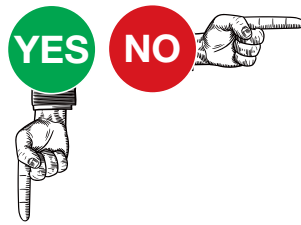
Please turn on. Turning the energiser on is essential for effective fence operation.

**Is there a light flashing on the energiser & is there ticking sound?**



Please phone our service dept 01626 331188.

**Disconnect the clips from your fence and earth and hold closely together. Do you get a spark from one to another?**



Please phone our service dept 01626 331188.

**Your energiser seems to be working it is likely the fault is with your fence or your earth. Check**

**What type of fence are you using? Is your energiser powerful enough to power your fence requirement?**

Refer to the energiser guidelines to see if it is operating within distance parameters. Certain type of wires/tapes are also only suitable over limited distances as they are higher in resistance. Netting is particularly thirsty for power, we recommend a minimum of 0.5 stored joules for 50m of poultry net.

**Is the fence line touching something that is taking power to ground?**

Your wire, tape, rope or net needs to be as clear as possible from any external contact which is not insulated from the ground. This includes wooden posts, sheds, arks. Check the line is positioned in the insulators correctly, that all insulators are intact and undergrowth is as free as possible from the live lines. Any contact will draw power from your fence.

**Have you joins and/or breaks in the fence line ?**

When joining sections of plastic tape, rope or wire it is preferable to use the correct connector or buckle. This ensures all of the metal conductors in one side connects with all of the conductors in the next and power is efficiently transferred without loss. The metal conductors can also break over time reducing efficiency, walk the line looking for patches of wear which may be causing a constriction in the voltage flow.

**Do you have an ineffective earth system?**

Poor earthing results in loss of voltage. We recommend a minimum of one independent, 1 metre stake. Using the metal stand on an energiser will be variable because of the changeable topsoil conditions. A building earth should not be used or the frame of metal buildings. If you detect voltage on or get a shock from your earth stake it is indicative of a ineffective earth and can be rectified by adding further earth stakes and linking them together. Increasing the earth stakes in your system can only improve the performance of the fence.



Hotline-horizont Ltd  
2 Roundhead Road  
Heathfield Industrial Estate  
Newton Abbot TQ12 6UE  
United Kingdom

+44 (0)1626 331188  
office@hotline-fencing.co.uk  
hotline-fencing.co.uk

